

STANLEY



HAND TOOLS & STORAGE ASIA CATALOGUE 2024

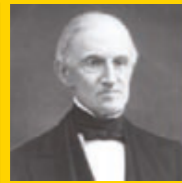
THE MEASURE OF A PRO™
STANLEYTOOLS.COM

THE HISTORY OF STANLEY® TOOLS



1843

The STANLEY WORKS was founded in New Britain, Connecticut by Frederick T. Stanley.



1863

STANLEY introduced hammers to their line-up



1870

STANLEY began manufacturing screwdrivers and hand planes

1911

STANLEY began manufacturing chisels and vises

1920

A new logo is introduced to symbolize the merger of the Stanley Rule & Level Company and the Stanley Works



1936

STANLEY manufactured its 1st utility knife



1954

Time Magazine published a cover story titled "Do-It-Yourself - The New Million Dollar Hobby." STANLEY was ideally positioned to benefit from this trend and quickly developed products for this new market



1999

STANLEY launched the FATMAX Tape Rule and the FATMAX AntiVibe Hammer



2020

STANLEY launched innovative SLIM SAG platform with best in class Girth diameter



2024

STANLEY continues to introduce new and innovative products that change the way we work

1854

Begin to manufacture boxwood rules

1876

Miter boxes were introduced



1930

STANLEY made the 1st steel tape rule



1928

The Stanley Works broke into the electric hand tools market with an electric drill, screwdriver and bench grinder

1963

STANLEY opened the largest hand tool plant in the world in New Britain, CT. The same year, they introduce the PowerLock Tape Rule



1998

STANLEY acquired ZAG Industries Lt., an Israeli maker of plastic storage products, including tool boxes



2015

STANLEY newly launched power tools range



2011

STANLEY launches carbide blades

2023

180 Anniversary

2021

V20 Cordless Platform launched



STANLEY®

OUR STORY

STANLEY® has set the precedent for quality tools and engineered solutions for professionals around the globe for more than 175 years. With a legacy of reliability, STANLEY is the No. 1 tapes manufacturer in the world and continues to drive the industry forward with innovations including the STANLEY® FATMAX® product line as well as hand tools, power tools, storage and accessories that get the job done.

We're proud of our reputation for excellence and are dedicated to continually testing, designing, and improving our products to ensure quality and maximum function. Maintaining our standing as the world's best at what we do is vital to us and what you expect from a name like STANLEY.

For more than 175 years our innovative products have helped build, repair and protect our world. Today that legacy continues. Explore our history by using the interactive timeline below.



STANLEY

STANLEY® is the longest established and largest hand tool manufacturer in the world. Since 1843, STANLEY® has become a leading name in hand tool industry; we've set the standard for excellence in everything we do. No company on earth has a stronger or more compelling history of delivering the hardworking, powerful and innovational tools that help professionals, tradesmen and consumers around the world. Whether you're a retailer looking for the best quality products to offer your customers, or a skilled user looking for the best tools, STANLEY® is here to serve you.

STANLEY® GLOBAL PRESENCE

20+ Global manufacturing sites and labs with similar process and quality controls for consistent quality.



AWARDS & RECOGNITION

MORE THAN 500
WORLD'S FIRST SKUs



MORE THAN 150 PATENTS



MORE THAN 150
PRESTIGIOUS AWARDS



STANLEY WINS POPULAR MECHANICS 2021 TOOL AWARD

MOST REPUTABLE
2014 WORLD'S MOST REPUTABLE
AMERICAN COMPANIES

STANLEY BLACK & DECKER RANKED
11TH MOST REPUTABLE

**BRAND OF THE
YEAR 2019**

PRWEEK'S PURPOSE AWARDS

MOST ADMIRABLE
2019 WORLD'S MOST
ADMIRABLE COMPANIES

STANLEY BLACK & DECKER RANKED
5TH MOST ADMIRABLE

**AMERICA'S
BEST
EMPLOYERS
FOR WOMEN**

**BEST
PLACES
TO WORK FOR
LGBTQ EQUALITY
DIVERSITY**

CORPORATE EQUALITY
INDEX

**BEST
OUTLOOK FOR GLOBAL
CULTURE & PLACES
TO WORK**

COMPARABLY

**WORLD'S
BEST EMPLOYERS**

FORBES

**WORLD'S
TOP
FEMALE-FRIENDLY
COMPANIES**

FORBES

#28
U.S. REPTRAK
MOST REPUTABLE
COMPANIES

REPUTATION
INSTITUTE

**#1
WORLD
LEADER
IN TOOLS INDUSTRY**

100
BEST CORPORATE
CITIZENS

3BL MEDIA

**BEST
COMPANY**
FOR LEADERSHIP,
DEVELOPMENT
& HAPPINESS

COMPARABLY

4TH
CONSECUTIVE YEAR

DOW JONES SUSTAINABILITY
WORLD INDEX

**#1
WORLD
LEADER**
IN ENGINEERED
FASTENING SYSTEMS

14
TOOL AWARDS

POPULAR
MECHANICS

46
PRODUCTS NAMED

PRO TOOL
INNOVATION AWARDS

BEST
RIDING LAWN
MOWERS

BOB VILA

BEST
WORKPLACE FOR
INNOVATORS

FAST COMPANY

60
COUNTRIES
GLOBAL
PRESENCE

5TH
CONSECUTIVE
YEAR MOST JUST
COMPANIES

JUST CAPITAL

#30
100 MOST
SUSTAINABLE
COMPANIES

BARRON

**AMERICA'S
MOST RESPONSIBLE
COMPANIES**

NEWSWEEK

CLEAN200
ON THE LIST

CORPORATE KNIGHTS

6TH
WATER CHANGE
A-LIST

CDP

11TH
CONSECUTIVE YEAR

DOW JONES SUSTAINABILITY
NORTH AMERICA INDEX

9 YEARS
ON CLIMATE
CHANGE A-LIST

CDP

HAND TOOLS & STORAGE

STANLEY® manufactures hand tools and storages for professionals and for those who demand professional equipment to build, make, repair, and sometimes demolish. Trusted tools used day in and day out. Shop our complete offering of hand tools and storages, including tape measures, cutting tools, screwdrivers, and more.



TAPES



WRENCHES



STORAGE



ETOOLS



SETS



KNIFE & BLADES



SCREWDRIVERS & PILERS

CONTENT

1

WRENCHES P12-19



COMBINATION WRENCHES
DOE
RING
ADJUSTABLE WRENCHES
PIPE WRENCHES
SLOGGING WRENCHES
T-HANDLE
TORQUE WRENCHES

2

SOCKETS, SETS, & SOCKET ACCESSORIES P20-33



MASTER TOOL SETS
HONDA TOOL KIT
MULTI-TOOL SETS
HOME TOOL KIT
TRADESMEN KIT

5

MEASURING & LAYOUT TOOLS P56-67



SHORT/LONG MEASURING TAPE
CONTROL LOCK TAPES
CHALK LINE LEVEL
SQUARE
PLUMB BOB
SQUARES
LEVELS
TORPEDO
BOX
I-BEAM
OPTICAL LEVELS

6

ELECTRONIC DEVICES & LASERS P68-71



MOISTURE METER
THERMOMETER
STUD FINDER & DETECTORS
LASER DISTANCE MEASURERS
LASER LEVELS

9

HEX KEY SETS P92-97



FOLDING HEX KEYS
HEX KEY SETS
T-HANDLE HEX KEY SETS
LONG SPHERICAL HEX KEYS

10

STRIKING TOOLS P98-101



FIBERGLASS
WOOD GRIP HAMMER
COMPO CAST HAMMER
ONE PIECE STEEL HAMMER
HATCHET
CAMP AXE

13

FINISHING TOOLS P124-129



FILES & RASPS
PLANES
SURFORMS

14

WORKHOLDING & CLAMPS P130-133



WORKBENCH
VICE
TRIGGER CLAMP
C-CLAMPS
F-CLAMP

15

FASTENING TOOLS P134-137



SOLDERING IRON
GLUE
GUNS CORDED/CORDLESS
GLUE STICKS
RIVETING
STAPLING

16

PRY BARS P138-139



WRECKING BAR
RIPPING BAR
FUBAR

3

MIXED TOOL SETS P34-37



MASTER TOOL SETS
HONDA TOOL KIT
MULTI-TOOL SETS
HOME TOOL KIT
TRADESMEN KIT

4

TOOLS STORAGE P38-55



ORGANIZERS
TOOLBOXES
PORTABLE STORAGE
SOFT STORAGE
TOOL VEST
ROLLER CABINETS

7

SCREWDRIVERS & KEYS P72-81



TESTERS
CUSHION GRIP
FIX BAR SCREWDRIVERS
INSULATED SCREWDRIVERS
MULTI-BIT SCREWDRIVERS

8

PLIERS P82-91



INSULATED PLIERS
WATER PUMP PLIERS
NOSE PLIERS
LINESMAN PLIERS
PINCERS
CIRCLIP PLIERS
WIRE STRIPPERS
LOCKING PLIERS
SLIP-JOINT PLIERS

11

CUTTING TOOLS P102-119



KNIVES & BLADES
POCKET
RETRACTABLE KNIVES
UTILITY
SNAP-OFF KNIVES & BLADES
PULL CUTTER
HACKSAW
HANDSAW
SNIP
PIPE BENDER
PLANES
SCRAPER
SURFORM
PAINT ROLLERS

12

SPECIALTY TOOLS P120-123



GREASE GUN
AIR GUN
INSP MIRROR
3 JAW PULLER
FEELER GAUGE
TYRE REPAIR KIT
OIL FILTER WRENCH
SCREW EXTRACTOR
BOTTLE JACKS

17

CHISEL & PUNCHES P140-143



COLD CHISEL
PUNCH & CHISEL SET
PUNCH
WOOD CHISEL

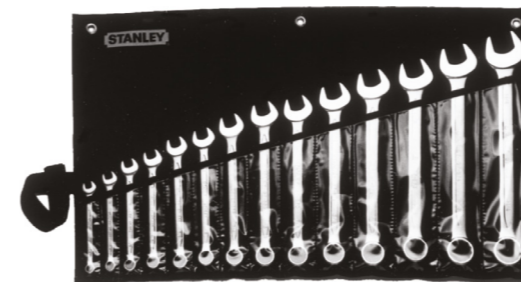


WRENCHES

COMBINATION WRENCHES, DOE, RING, ADJUSTABLE WRENCHES, PIPE WRENCHES, SLOGGING WRENCHES, T-HANDLE, TORQUE WRENCHES

THE MEASURE OF A PRO
www.STANLEYTOOLS.com

SLIMLINE COMBINATION SPANNER SET - CRV



SKU No.	DESCRIPTION
1-87-709	14pcs Slimline Comb Spanner Set (Inches) 3/8", 7/16", 1/2", 9/16", 5/8", 11/16", 3/4", 13/16", 7/8", 15/16", 1", 11/16", 11/8", 11/4"
1-87-038	14pcs Slimline Comb Spanner Set (Metric) 10, 11, 12, 13, 14, 17, 19, 21, 22, 23, 24, 26, 30, 32mm

COMBINATION WRENCH SET



- Combination wrench 8 mm
- Combination wrench 10 mm
- Combination wrench 11 mm
- Combination wrench 12 mm
- Combination wrench 13 mm
- Combination wrench 14 mm
- Combination wrench 17 mm
- Combination wrench 19 mm



SKU No.	DESCRIPTION
STMT73649-8	8pcs Combination Wrench Set
STMT74897-8	16pcs Combination Wrench Module

COMBINATION SPANNER SET



SKU No.	DESCRIPTION
STMT78092-8	14pcs Comb Spanner Set (Metric) 8, 9, 10, 11, 12, 13, 14, 15, 16, 17, 19, 21, 22 & 24mm
STMT78096-8	13pcs Comb Spanner Set (Inches) 1/4", 5/16", 3/8", 7/16", 1/2", 9/16", 5/8", 11/16", 3/4", 13/16", 7/8", 15/16", 1"

6PCS CWB SET IN HOLDER



SKU No.	DESCRIPTION
STMT81560-LA	13pcs Inch Combination Wrench Set

COMBINATION WRENCH SET



SKU No.	DESCRIPTION
STMT78097-8	12pcs Combination Wrench Set, 6-24mm
STMT78098-8	9pcs Combination Wrench Set, 8-17mm
STMT78099-8	8pcs Combination Wrench Set, 8-19mm

COMBINATION WRENCH BASIC SET



SKU No.	DESCRIPTION
STMT80940-8	8pcs Cwb Black Pouch Set - Metric
STMT80941-8	9pcs Cwb Black Pouch Set - Metric
STMT80942-8	11pcs Cwb Black Pouch Set - Metric
STMT80943-8	12pcs Cwb Black Pouch Set - Metric
STMT80944-8	14pcs Cwb Black Pouch Set - Metric
STMT80946-8	14pcs Cwb Black Pouch Set - Metric

ROLLING CABINET - 5 DRAWERS



SKU No.	DESCRIPTION
STMT80215-8	Combination Wrench Basic 6mm
STMT80216-8	Combination Wrench Basic 7mm
STMT80217-8	Combination Wrench Basic 8mm
STMT80218-8	Combination Wrench Basic 9mm
STMT80219-8	Combination Wrench Basic 10mm
STMT80220-8	Combination Wrench Basic 11mm
STMT80222-8	Combination Wrench Basic 12mm
STMT80223-8	Combination Wrench Basic 13mm
STMT80224-8	Combination Wrench Basic 14mm
STMT80225-8	Combination Wrench Basic 15mm
STMT80226-8	Combination Wrench Basic 16mm
STMT80229-8	Combination Wrench Basic 17mm
STMT80231-8	Combination Wrench Basic 18mm
STMT80233-8	Combination Wrench Basic 19mm
STMT80234-8	Combination Wrench Basic 20mm
STMT80235-8	Combination Wrench Basic 21mm
STMT80236-8	Combination Wrench Basic 22mm
STMT80238-8	Combination Wrench Basic 23mm
STMT80239-8	Combination Wrench Basic 24mm
STMT80240-8	Combination Wrench Basic 25mm
STMT80241-8	Combination Wrench Basic 26mm
STMT80242-8	Combination Wrench Basic 27mm
STMT80243-8	Combination Wrench Basic 28mm
STMT80244-8	Combination Wrench Basic 30mm
STMT80245-8	Combination Wrench Basic 32mm

14PCS COMBINATION WRENCH SET



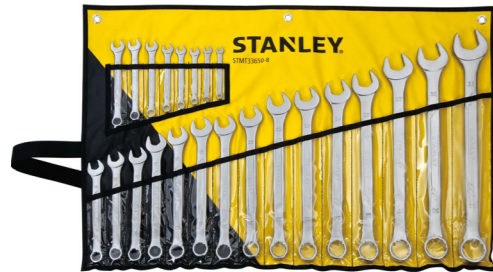
SKU No.	DESCRIPTION
STMT73647-8	14pcs Combination Wrench Set

16PCS COMBINATION WRENCH MODULE (CWF)



SKU No.	DESCRIPTION
STMT74178-8	16pcs Combination Wrench Module (Cwf)

23PCS COMBINATION WRENCH SET



SKU No.	DESCRIPTION
STMT33650-8	23pcs Combination Wrench Set

WRENCH SET COMB SLIMLINE MET



SKU No.	DESCRIPTION
87-033-1	9pcs Wrench Set Comb SI Met
87-038-1	14pcs Wrench Set Comb SI Met

WRENCH COMB SLIMLINE



SKU No.	DESCRIPTION
87-057	Wrench Comb SI 07mm
87-058	Wrench Comb SI 08mm
87-066	Wrench Comb SI 06mm
87-069	Wrench Comb SI 09mm
87-070	Wrench Comb SI 10mm
87-071	Wrench Comb SI 11mm
87-072	Wrench Comb SI 12mm
87-073	Wrench Comb SI 13mm
87-074	Wrench Comb SI 14mm
87-075	Wrench Comb SI 15mm
87-076	Wrench Comb SI 16mm
87-077	Wrench Comb SI 17mm
87-078	Wrench Comb SI 18mm
87-079	Wrench Comb SI 19mm
87-081	Wrench Comb SI 21mm
87-082	Wrench Comb SI 22mm
87-083	Wrench Comb SI 23mm
87-084	Wrench Comb SI 24mm
87-086-1	Wrench Comb SI 26mm
87-087	Wrench Comb SI 27mm
87-088-1	Wrench Comb SI 28mm
87-090	Wrench Comb SI 30mm
87-092	Wrench Comb SI 32mm
87-263-22	Wrench Comb SI 33mm

WRENCH COMB SLIMLINE



SKU No.	DESCRIPTION
87-665-1	Wrench Comb SI In-9/16
87-667-1	Wrench Comb SI In-11/16

WRENCH SET COMB SLIMLINE



SKU No.	DESCRIPTION
87-709-1	Wrench Set Comb SI 14pcs Imp

COMBINATION WRENCH



SKU No.	DESCRIPTION
STMT72824-8B	Combination Wrench 27mm
STMT72827-8B	Combination Wrench 30mm

OPEN END WRENCHES SET IN POUCH



SKU No.	DESCRIPTION
STMT23124	9pcs Open End Wrenches Set In Pouch



WRENCH O/E SLIMLINE



SKU No.	DESCRIPTION
87-677-1	Wrench O/E SI In-5/16" X3/8
87-716-1	Wr Set O/E SI 6pcs Met
87-718-1	Wr Set O/E SI 8pcs Met

75 DEG BOX END WRENCH



SKU No.	DESCRIPTION
87-803-1	Wrench Box End 75 Deg 10x11mm
87-804-1	Wrench Box End 75 Deg 12x13mm
87-805-1	Wrench Box End 75 Deg 14x15mm
87-576-1	Wrench Set Box End 75deg 8pcs Met

ADJUSTABLE WRENCH CHROME-PLATED



SKU No.	DESCRIPTION
1-87-430	Adjustable Wrench - 100mm
87-430-1-S	Adjustable Wrenches 4
STMT87431-8	Adjustable Wrench 150mm
STMT87432-8	Adjustable Wrench 200mm
STMT87433-8	Adjustable Wrench 250mm
STMT87434-8	Adjustable Wrench 300mm
STMT87435-8	Adjustable Wrench 375mm

HD ADJUSTABLE WRENCH



SKU No.	DESCRIPTION
87-371-1-S	Adjustables Wrenches 18'
87-796-23	Hd Adjustable Wrench 18'
97-797-S	Hd Adjustable Wrench 24'

RATCHETING WRENCH



SKU No.	SKU No
STMT89934-8	Ratcheting Wrench 8mm
STMT89935-8	Ratcheting Wrench 9mm
STMT89936-8	Ratcheting Wrench 10mm
STMT80012-8B	Ratcheting Wrench 11mm
STMT89937-8	Ratcheting Wrench 12mm
STMT89938-8	Ratcheting Wrench 13mm
STMT89939-8	Ratcheting Wrench 14mm
STMT89940-8	Ratcheting Wrench 15mm
STMT89941-8	Ratcheting Wrench 16mm
STMT89942-8B	Ratcheting Wrench 17mm
STMT89943-8	Ratcheting Wrench 18mm
STMT89944-8	Ratcheting Wrench 19mm

RING WRENCH METRIC



SKU No.	DESCRIPTION
4-87-801	Ring Wrench Metric 6x7mm

ADJUSTABLE WRENCH PHOSPHATE PLATED



SKU No.	DESCRIPTION
STMT74893-8	Adjustable Wrench 150mm-6"
STMT74894-8	Adjustable Wrench 200mm-8"
STMT74895-8	Adjustable Wrench 250mm-10"
STMT74896-8	Adjustable Wrench 300mm-12"

PIPE WRENCH



SKU No.	DESCRIPTION
84-467-23	Aluminum Pipe Wrench 600mm-24

RING WRENCHES SET IN POUCH



SKU No.	DESCRIPTION
STMT25147	9pcs Offset Ring Wrenches Set In Pouch

OFFSET DOUBLE RING MODULE



SKU No.	DESCRIPTION
STMT74177-8	10pcs Offset Double Ring Module

MAXSTEEL ADJUSTABLE WRENCH



SKU No.	DESCRIPTION
90-947	Maxsteel Adjustable Wrench 6" 160mm
90-948	Maxsteel Adjustable Wrench 8" 200mm
90-949	Maxsteel Adjustable Wrench 10" 250mm
90-950-22	Maxsteel Adjustable Wrench 12" 300mm

PIPE WRENCH - STILLSON PATTERN



SKU No.	DESCRIPTION
71-641	Pipe Wrench 250mm-10"
71-642	Pipe Wrench 300mm-12"
71-643	Pipe Wrench 350mm-14"
71-644	Pipe Wrench 450mm-18"
71-645	Pipe Wrench 600mm-24"

PIPE WRENCH - HEAVY DUTY



SKU No.	DESCRIPTION
87-622-23	Pipe Wrench 250mm-10"
87-623-23	Pipe Wrench 300mm-12"
87-624-23	Pipe Wrench 350mm-14"
87-625-23	Pipe Wrench 450mm-18"
87-626-23	Pipe Wrench 600mm-24"
87-627-23	Pipe Wrench 900mm-36"
87-620-S	Wrenchpipe 6
87-621-S	Wrench Pipe 8
87-622-S	Wrench Pipe 10
87-623-S	Wrench Pipe 12
87-624-S	Wrench Pipe 14
87-625-S	Wrench Pipe 18
87-626-S	Wrench Pipe 24
87-627-S	Wrench Pipe 36

WRENCH BASIN



SKU No.	DESCRIPTION
87-448	Wrench Basin 22mm/ 7/8

CROSS WRENCH



SKU No.	DESCRIPTION
STMT94030-8	Cross Wrench

RING SLOGGING WRENCHES



SKU No.	DESCRIPTION
71-682	24mm
96-911	27mm
96-913	30mm
96-914	32mm
96-915	36mm
96-918	46mm
96-919	50mm
96-920	55mm
96-922	65mm
96-924	75mm

OPEN END SLOGGING WRENCHES



SKU No.	DESCRIPTION
96-936-23	30mm
96-938-23	32mm
96-939-23	36mm
96-940-23	41mm
96-941-23	46mm
96-950-23	50mm
96-951	55mm
96-952	60mm
96-953	65mm
96-954-23	70mm

T-HANDLE



SKU No.	DESCRIPTION
STMT93302-8	T-Handle 8mm
STMT93303-8	T-Handle 9mm
STMT93304-8	T-Handle 10mm
STMT93305-8	T-Handle 11mm
STMT93306-8	T-Handle 12mm
STMT93307-8	T-Handle 13mm
STMT93308-8	T-Handle 14mm
STMT93309-8	T-Handle 17mm

3/8" DEEP IMPACT SOCKET WITH TORQUE WRENCH



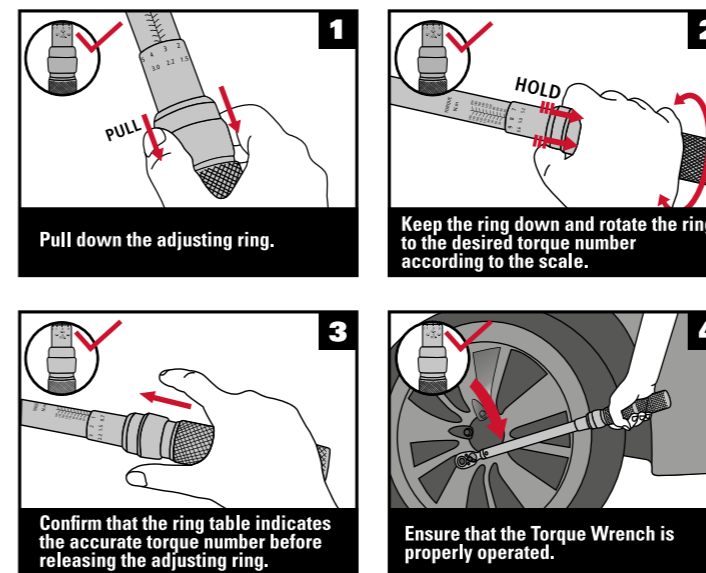
SKU No.	DESCRIPTION
STMT73587-8	1/4" Torque Wrench 5-25nm
STMT73588-8	3/8" Torque Wrench 10-50nm
STMT73589-8	1/2" Torque Wrench 20-100nm
STMT73590-8	1/2" Torque Wrench 40-200nm
STMT73591-8	1/2" Torque Wrench 60-340nm
STMT73592-8	3/4" Torque Wrench 150-750nm



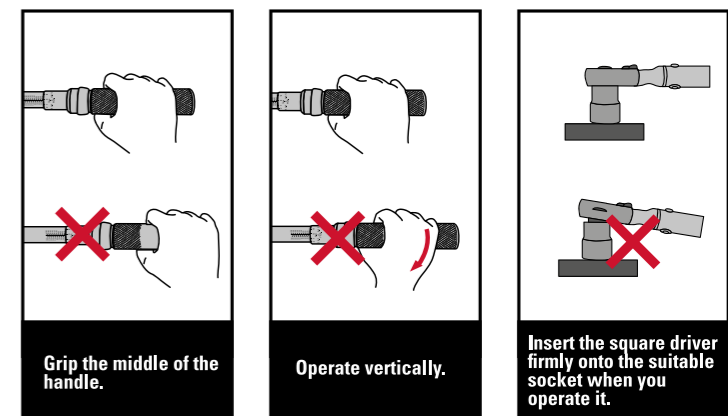
NEW & IMPROVED

WRENCHES

OPERATION MANUAL



TIPS OF DUAL WAY



- Compliant with ISO 6789 and ASME B107.14
- ± 3% Factory Accuracy

SPECIFICATION TABLE

SKU#	DESCRIPTION	MAIN TORQUE RANGE	SECONDARY TORQUE RANGE	SQUARE DRIVE	FINE SCALE	LENGTH
STMT73587-1-8	1/4" TORQUE WRENCH 5-25 N-m 3% AC	5-25 N-m	48.7-220 lbf-in	1/4"	0.1 N-m	245
STMT73588-1-8	3/8" TORQUE WRENCH 10-50 N-m 3% AC	10-50 N-m	9.5-36.5 lbf-ft	3/8"	0.5 N-m	410
STMT73589-1-8	1/2" TORQUE WRENCH 20-100 N-m 3% AC	20-100 N-m	15-73.5 lbf-ft	1/2"	0.5 N-m	410
STMT73590-1-8	1/2" TORQUE WRENCH 40-200 N-m 3% AC	40-200 N-m	30-147.5 lbf-ft	1/2"	1 N-m	520
STMT73591-1-8	1/2" TORQUE WRENCH 60-340 N-m 3% AC	60-340 N-m	44.5-250.5 lbf-ft	1/2"	2 N-m	610
STMT73592-1-8	3/4" TORQUE WRENCH 150-750 N-m 3% AC	150-750 N-m	111-553.5 lbf-ft	3/4"	5 N-m	1125

• After each use, please set torque wrench back to 10% of its working capacity to ensure accuracy.



SOCKETS, SETS, & SOCKET ACCESSORIES

1/2", & 3/4" 1/4", 3/8" DRIVE SOCKETS & SETS, IMPACT SOCKETS, SOCKET ACCESSORIES

THE MEASURE OF A PRO
www.STANLEYTOOLS.com

75 PCS SOCKET SET



SKU No.	DESCRIPTION
1-94-660	75pcs 1/4" 1/2" Dr Uptier Socket Set

7PCS 1/2 SQ. DR. HEX BIT SOCKET SET



SKU No.	DESCRIPTION
1-89-099	7pcs 1/2 Sq. Dr. Hex Bit Socket Set Met
7 PCS 1/2 Drive Hex Bit Socket: 6,8,10,12,14,17,19mm	

7PCS HEX BIT SOCKET SET



SKU No.	DESCRIPTION
89-099-1	Skt Set 1/2" Dr 7pcs Hex Bit



1/2" HEXAGONAL BIT SOCKET



SKU No.	DESCRIPTION
STMT73371-8B	1/2" Hexagonal Bit Socket 4mm
STMT73372-8B	1/2" Hexagonal Bit Socket 5mm
STMT73373-8B	1/2" Hexagonal Bit Socket 6mm
STMT73374-8B	1/2" Hexagonal Bit Socket 7mm
STMT73375-8B	1/2" Hexagonal Bit Socket 8mm
STMT73376-8B	1/2" Hexagonal Bit Socket 9mm
STMT73377-8B	1/2" Hexagonal Bit Socket 10mm
STMT73378-8B	1/2" Hexagonal Bit Socket 12mm
STMT73379-8B	1/2" Hexagonal Bit Socket 14mm
STMT73380-8B	1/2" Hexagonal Bit Socket 17mm
STMT73381-8B	1/2" Hexagonal Bit Socket 19mm

1/2" LONG IMPACT SOCKET



SKU No.	DESCRIPTION
STMT91379-8B	1/2" Long Impact Socket 12mm
STMT87501-8B	1/2" Long Impact Socket 14mm
STMT87504-8B	1/2" Long Impact Socket 17mm
STMT87506-8B	1/2" Long Impact Socket 19mm
STMT87507-8B	1/2" Long Impact Socket 21mm

STANDARD IMPACT SOCKET SET



SKU No.	DESCRIPTION
STMT73916-8	1/2" Standard Impact Socket Set (13pcs)

1/2" IMPACT SOCKET



SKU No.	DESCRIPTION
STMT89435-8B	1/2" Impact Socket 8mm
STMT89436-8B	1/2" Impact Socket 9mm
STMT89437-8B	1/2" Impact Socket 10mm
STMT89438-8B	1/2" Impact Socket 11mm
STMT89439-8B	1/2" Impact Socket 12mm
STMT89440-8B	1/2" Impact Socket 13mm
STMT89441-8B	1/2" Impact Socket 14mm
STMT89442-8B	1/2" Impact Socket 15mm
STMT89443-8B	1/2" Impact Socket 16mm
STMT89444-8B	1/2" Impact Socket 17mm
STMT89445-8B	1/2" Impact Socket 18mm
STMT89446-8B	1/2" Impact Socket 19mm
STMT89447-8B	1/2" Impact Socket 20mm
STMT89448-8B	1/2" Impact Socket 21mm
STMT89449-8B	1/2" Impact Socket 22mm
STMT89450-8B	1/2" Impact Socket 23mm
STMT89451-8B	1/2" Impact Socket 24mm
STMT89452-8B	1/2" Impact Socket 25mm
STMT89453-8B	1/2" Impact Socket 26mm
STMT89454-8B	1/2" Impact Socket 27mm
STMT89455-8B	1/2" Impact Socket 28mm
STMT89456-8B	1/2" Impact Socket 30mm
STMT89458-8B	1/2" Impact Socket 32mm

1/2" FLIP DRIVE RATCHET



SKU No.	DESCRIPTION
1-87-720	Ratchet 1/2 Sq. Dr. Flip Drive

ROUND HEAD RATCHET



SKU No.	DESCRIPTION
STMT86397-8B	1/2" Round Head Ratchet

1/2" ROUND HEAD RATCHET



SKU No.	DESCRIPTION
1-86-397	Ratchet 1/2 Sq. Dr Quick Release

PEAR HEAD RATCHET P7



SKU No.	DESCRIPTION
STMT89819-8B	1/2" Sd Pear Head Ratchet P7

1/2" PEAR HEAD RATCHET



SKU No.	DESCRIPTION
STMT95893-8B	1/2" Sd Pear Head Ratchet P9

RATCHET SET



SKU No.	DESCRIPTION
STMT82671-0	11pcs 1/2" Ratchet Set

HANDLE FLEX



SKU No.	DESCRIPTION
86-413	Handle Flex 1/2" Dr 439mm

1/2" 6 PT STANDARD SOCKET (HEX)



SKU No.	SIZE
1-86-508	8mm
1-86-509	9mm
1-86-510	10mm
1-86-511	11mm
1-86-512	12mm
1-86-513	13mm
1-86-514	14mm
1-86-515	15mm
1-88-738	16mm
1-88-739	17mm
1-88-740	18mm
1-88-741	19mm
1-88-742	20mm
1-88-743	21mm
1-88-744	22mm
1-88-745	23mm
1-88-746	24mm
1-88-747	25mm
1-88-748	26mm
1-88-749	27mm
1-88-750	28mm
1-88-751	29mm
1-88-752	30mm
1-88-753	32mm
1-86-196	34mm
1-86-536	36mm

SLIDING T-BAR 1/2" DR 243MM



SKU No.	DESCRIPTION
86-440-1	Sliding T-Bar 1/2" Dr 243mm

1/2" 12 PT STANDARD SOCKET (BI-HEX)



SKU No.	SIZE
1-86-540	8mm
1-86-542	10mm
1-86-543	11mm
1-86-544	12mm
1-86-545	13mm
1-86-546	14mm
1-86-547	15mm
1-88-788	16mm
1-88-789	17mm
1-88-790	18mm
1-88-791	19mm
1-88-792	20mm
1-88-793	21mm
1-88-794	22mm
1-88-796	24mm
1-88-799	27mm
1-88-802	30mm
1-88-803	32mm
1-86-192	34mm

1/2" TORX SOCKET



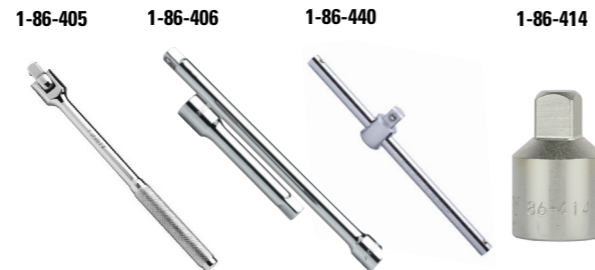
SKU No.	DESCRIPTION
STMT73362-8B-12	1/2" Torx Socket E10
STMT73363-8B	1/2" Torx Socket E11
STMT73364-8B-12	1/2" Torx Socket E12
STMT73365-8B-12	1/2" Torx Socket E14
STMT73366-8B	1/2" Torx Socket E16
STMT73367-8B	1/2" Torx Socket E18
STMT73368-8B	1/2" Torx Socket E20
STMT73369-8B-12	1/2" Torx Socket E22
STMT73370-8B	1/2" Torx Socket E24

1/2" 12 PT STANDARD SOCKET



SKU No.	DESCRIPTION
STMT72961-8B	1/2" 12 Pt Standard Socket 10mm
STMT72963-8B	1/2" 12 Pt Standard Socket 12mm
STMT72964-8B	1/2" 12 Pt Standard Socket 13mm
STMT72965-8B	1/2" 12 Pt Standard Socket 14mm
STMT72966-8B	1/2" 12 Pt Standard Socket 15mm
STMT72967-8B	1/2" 12 Pt Standard Socket 16mm
STMT72968-8B	1/2" 12 Pt Standard Socket 17mm
STMT72969-8B	1/2" 12 Pt Standard Socket 18mm
STMT72970-8B	1/2" 12 Pt Standard Socket 19mm
STMT72971-8B	1/2" 12 Pt Standard Socket 20mm
STMT72972-8B	1/2" 12 Pt Standard Socket 21mm
STMT72973-8B	1/2" 12 Pt Standard Socket 22mm
STMT72975-8B	1/2" 12 Pt Standard Socket 24mm

1/2" ACCESSORIES



SKU No.	DESCRIPTION
1-86-405	Flex Handle 1/2 Sq. Dr. 250mm-10"
1-86-440	Sliding Tee 1/2 Sq
1-86-414	Adapter 1/2" Dr F*3/8" M
1-88-558	Adapter 1/2 Sq. Dr. F*3/4 Sq. Dr. M

1/2" 6 PT LONG-REACH SOCKET



SKU No.	DESCRIPTION
STMT73324-8B	1/2" 6 Pt Long-Reach Socket 10mm
STMT73325-8B	1/2" 6 Pt Long-Reach Socket 11mm
STMT73326-8B	1/2" 6 Pt Long-Reach Socket 12mm
STMT73327-8B	1/2" 6 Pt Long-Reach Socket 13mm
STMT73328-8B	1/2" 6 Pt Long-Reach Socket 14mm
STMT73329-8B	1/2" 6 Pt Long-Reach Socket 15mm
STMT73330-8B	1/2" 6 Pt Long-Reach Socket 16mm
STMT73331-8B	1/2" 6 Pt Long-Reach Socket 17mm
STMT73332-8B	1/2" 6 Pt Long-Reach Socket 18mm
STMT73333-8B	1/2" 6 Pt Long-Reach Socket 19mm
STMT73334-8B	1/2" 6 Pt Long-Reach Socket 21mm
STMT73335-8B	1/2" 6 Pt Long-Reach Socket 22mm
STMT73336-8B	1/2" 6 Pt Long-Reach Socket 23mm
STMT73337-8B	1/2" 6 Pt Long-Reach Socket 24mm
STMT73338-8B	1/2" 6 Pt Long-Reach Socket 27mm
STMT73339-8B	1/2" 6 Pt Long-Reach Socket 30mm
STMT73340-8B	1/2" 6 Pt Long-Reach Socket 32mm

1/2" IMPACT EXTENSION



SKU No.	DESCRIPTION
STMT86407-8B	1/2" Extension 125mm
STMT86408-8B	1/2" Extension 250mm
STMT86411-8B	1/2" Universal Joint
STMT88930-8B	1/2" Extension 75mm
4-86-408	1/2" Extension 250mm

27PCS 1/2" MET SOCKET SET



SKU No.	DESCRIPTION
86-477	Socket Set 1/2 Sq. Dr 27pcs pt Met

25PCS 1/2" IMP SOCKET SET



SKU No.	DESCRIPTION
86-478	Socket Set 1/2 Sq. Dr. 25pcs pt Imp

14PCS 1/2" 12 PT MET SOCKET SET



SKU No.	DESCRIPTION
86-501	Skt Set 1/2" Dr 14pcs 12pt Met

25PCS 1/2" 6PT MET SOCKET SET



SKU No.	DESCRIPTION
86-589-1	Skt Set 1/2" Dr 25pcs 6pt Met

43PCS SOCKET SET 1/2" MET/IM



SKU No.	DESCRIPTION
89-509	Socket Set 1/2 Sq. Dr. 43pcs Pt Met/Imp

24PCS 1/2" SOCKET SET



SKU No.	DESCRIPTION
STMT74184-8	24pcs 1/2 12pts Socket Set In Metal Tin

72 PCS 1/4"+1/2" SOCKET SET



SKU No.	DESCRIPTION
STMT82831-1-12	72pcs 1/4"+1/2" Socket Set

RATCHET 1/2" DR FLIP DRIVE



SKU No.	DESCRIPTION
87-720-1	Ratchet 1/2" Dr Flip Drive

24 PCS 1/2 " 6 PT SOCKET SET



SKU No.	DESCRIPTION
STMT72795-8	1/2 Sq. Drive Socket Set, 6 Pt. (24pcs)

023PCS 12DR METRIC SKT MODULE SET



SKU No.	DESCRIPTION
STMT74726-8C	023pcs 12dr Metric Skt Module Set

SOCKET SET 1/2" DR 16PCS 12PT MET



SKU No.	DESCRIPTION
89-092-1	Skt Set 1/2" Dr 16pcs 12pt Met

24PC 1/2" MET BIT SOCKET MODULE



SKU No.	DESCRIPTION
STMT74176-8	24pcs 1/2in Metric Bit Socket Module

23PCS 1/2" 12PT FLEX WR SOCKET MODULE



SKU No.	DESCRIPTION
STMT75095-8C	23pcs 1/2" 12pt Flex Wr Socket Module

9 PCS 1/2" TORX BIT SOCKET SET



SKU No.	DESCRIPTION
89-098	Skt Set 1/2" Dr 9pcs Torx Bit

- 1x 1/4' 72T bi-material ratchet
- 10x 1/4' sockets (6-points) : 5.5 – 14 mm
- 9x 1/4" long sockets (6-points) : 6 – 14 mm
- 2x 1/4" extensions : 3" – 6", 2x 1/2" extensions : 3" – 10"
- 1x 1/4" universal joint, 1x 1/2" universal joint
- 1x 1/4" bit holder, 2x 1/2" spark plugs : 16 – 21 mm
- 1x 1/4' spinner
- 22x 1/4' bits : PZ1-PZ2-PZ3 – PH1-PH2-PH3 HEX3-4-5-6-7
- Torx10-15-20-25-27-30-40 SLOTTED4-5-6-7
- 1x 1/2' 72T bi-material ratchet
- 19x 1/2' sockets (6-points) : 8 – 32 mm

SOCKETS, SETS, & SOCKET ACCESSORIES

1/2" TORX BIT SOCKET



SKU No.	DESCRIPTION
STMT73389-8B	1/2" Torx Bit Socket T20
STMT73390-8B	1/2" Torx Bit Socket T25
STMT73391-8B	1/2" Torx Bit Socket T27
STMT73392-8B	1/2" Torx Bit Socket T30
STMT73393-8B	1/2" Torx Bit Socket T40
STMT73394-8B	1/2" Torx Bit Socket T45
STMT73395-8B	1/2" Torx Bit Socket T50
STMT73396-8B	1/2" Torx Bit Socket T55
STMT73397-8B	1/2" Torx Bit Socket T60

1/4" PEAR HEAD RATCHET



SKU No.	DESCRIPTION
STMT95895-8B	1/4" Sd Pear Head Ratchet P9

1/4" DRIVE ACCESSORIES



SKU No.	DESCRIPTION
STMT86001-8B	1/4" Flexible Extension 150mm
STMT86010-8B	1/4" Sliding Tee
STMT86011-8B	1/4" Universal Joint
STMT91059-8B	1/4" Extension 50mm
STMT91339-8B	1/4" Extension 100mm

1/4" 6 PT LONG-REACH SOCKET



SKU No.	DESCRIPTION
STMT72872-8B	1/4" 6 Pt Standard Socket 3.5mm
STMT72873-8B	1/4" 6 Pt Standard Socket 4mm
STMT72874-8B	1/4" 6 Pt Standard Socket 4.5mm
STMT72875-8B	1/4" 6 Pt Standard Socket 5mm
STMT72876-8B	1/4" 6 Pt Standard Socket 5.5mm
STMT72877-8B	1/4" 6 Pt Standard Socket 6mm
STMT72878-8B	1/4" 6 Pt Standard Socket 7mm
STMT72879-8B	1/4" 6 Pt Standard Socket 8mm
STMT72880-8B	1/4" 6 Pt Standard Socket 9mm
STMT72881-8B	1/4" 6 Pt Standard Socket 10mm
STMT72882-8B	1/4" 6 Pt Standard Socket 11mm
STMT72883-8B	1/4" 6 Pt Standard Socket 12mm
STMT72884-8B	1/4" 6 Pt Standard Socket 13mm
STMT72885-8B	1/4" 6 Pt Standard Socket 14mm

1/4" ROUND HEAD RATCHET



SKU No.	DESCRIPTION
STMT86395-8B	1/4" Round Head Ratchet

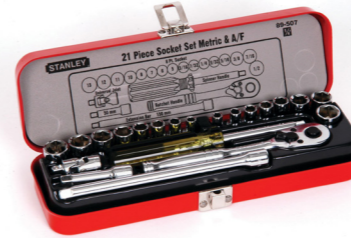
35PCS 1/4" SQ. DR. SOCKET SET 6PT MET



SKU No.	DESCRIPTION
1-89-033	35pcs 1/4 Sq. Dr. Socket Set 6pt Met

- 13 PCS 1/4 Drive 6 Point Sockets: 4,4.5,5,5.5,6,7,8,9,10,11,12,13,14mm
- 1 PCS Spinner Handle
- 2 PCS Extensions : 75,150mm
- 1 PCS Universal Joint
- 1 PCS "Professional" Ratchet
- 1 PCS Hex Bit Holder
- 4 PCS Hex Bit:3,4,5,6mm
- 6 PCS Torx® Bits: T-10,T-15,T-20,T-25,T-30,T-40
- 3 PCS Posidrive® Bits: 1,2,3
- 3 PCS Slotted Bits: 4,5,5.5

21PCS 1/4" SOCKET SET



SKU No.	DESCRIPTION
89-507	Drive Socket Set 21pcs 1/4

46 PCS 1/4" SOCKET & BIT SET



SKU No.	DESCRIPTION
STMT72794-8	1/4 Sq. Dr. Socket & Bit Set (46pcs)

60PCS 1/4IN METRIC SOCKET MODULE



SKU No.	DESCRIPTION
STMT74175-8	60pcs 1/4in Metric Socket Module

37PCS 1/4" COMPACT SOCKET SET



SKU No.	DESCRIPTION	CARTON
STMT82672-0	37pcs 1/4" Compact Socket Set	10

- 12 PCS 1/4" Sockets (12-points): 4, 4.5, 5, 6, 7, 8, 9, 10, 11, 12, 13, 14MM
- 1 PCS 1/4" Short Extension: 3"
- 1 PCS Bit Holder
- 22 PCS 1/4"
- Bits: PZ1, PZ2, PZ3, PH1, PH2, PH3
- Hex: 3, 4, 5, 6, 7
- Torx: 10, 15, 20, 25, 27, 30, 40
- Slotted: 4, 5, 6, 7

45PCS 3/8" DR SOCKET SETS



SKU No.	DESCRIPTION
STMT82829-1	45pcs 3/8" Dr Socket Sets

41PCS 1/2" & 1/4" DR MECH TOOLS



SKU No.	DESCRIPTION
STMT82832-1	41pcs 1/2" & 1/4" Dr Mech Tools

61PCS 3/8" MECH TOOLS SET



SKU No.	DESCRIPTION
STMT72061-8	61pcs 3/8" Mech Tools Set

DR PEAR HEAD RATCHET SET METRIC

NEW



SKU No.	DESCRIPTION
STMT45501	11pcs 1/2" Dr Pear Head Ratchet Set Metric
STMT45502	11pcs 1/2" Dr Pear Head Ratchet Set Imperial
STMT45503	26pcs 1/2" Dr Pear Head Ratchet Set Metric
STMT45504	20pcs 1/2" Dr Pear Head Ratchet Set Metric
STMT45505	43pcs 1/2" Dr Pear Head Ratchet Set Metric Imperial
STMT94693	32pcs 1/2" Dr Pear Head Ratchet Set
STMT45506	53pcs 1/2" Dr Pear Head Ratchet Set Metric
STMT45507	36pcs 1/2" Dr Pear Head Ratchet Set Metric
STMT45508-LA	25pcs 1/2" Dr Pear Head Ratchet Set Metric
STMT45509-LA	26pcs 1/2" Dr Round Head Ratchet Set Imperial

19 PCS 3/4" 12 PT SOCKET SET METRIC



SKU No.	DESCRIPTION
89-101	19pcs 3/4" Dr Metric 12 Point Socket Set

13 PCS 3/4 Drive 12 Point Sockets: 22,24,27,28,29,30,32,33,34, 36,38,41,42,46,50mm
 4pcs 3/4 Drive Accessories: 2 PCS Extension Bar: 200 and 400mm sliding T-bar 480mm
 Standard Ratchet.

3/4" DRIVE SOCKET



SKU No.	DESCRIPTION
STMT88908-8B	Coupler 3/4" To 1/2"
STMT89302-8B	3/4" Swivel Handle
STMT89303-8B	3/4" Sliding Tee

3/4" 6PT SOCKET



SKU No.	DESCRIPTION
STMT89319-8B	3/4" 6pt Socket 19mm
STMT89322-8B	3/4" 6pt Socket 22mm
STMT89324-8B	3/4" 6pt Socket 24mm
STMT89325-8B	3/4" 6pt Socket 25mm
STMT89327-8B	3/4" 6pt Socket 27mm
STMT89328-8B	3/4" 6pt Socket 28mm
STMT89330-8B	3/4" 6pt Socket 30mm
STMT89333-8B	3/4" 6pt Socket 33mm

3/4" 6PT SOCKET 32MM



SKU No.	DESCRIPTION
STMT89332-8B	3/4" 6pt Socket 32mm

3/4" 6PT SOCKET



SKU No.	DESCRIPTION
STMT89334-8B	3/4" 6pt Socket 34mm
STMT89336-8B	3/4" 6pt Socket 36mm
STMT89338-8B	3/4" 6pt Socket 38mm
STMT89341-8B	3/4" 6pt Socket 41mm
STMT89346-8B	3/4" 6pt Socket 46mm
STMT89350-8B	3/4" 6pt Socket 50mm

3/4" 12 PTS SOCKET



SKU No.	DESCRIPTION
STMT89619-8B	3/4" 12 Pts Socket 19mm
STMT89624-8B	3/4" 12 Pts Socket 24mm
STMT89627-8	3/4" 12 Pts Socket 27mm
STMT89628-8B	3/4" 12 Pts Socket 28mm
STMT89630-8B	3/4" 12 Pts Socket 30mm
STMT89636-8B	3/4" 12 Pts Socket 36mm
STMT89638-8B	3/4" 12 Pts Socket 38mm
STMT89650-8B	3/4" 12 Pts Socket 50mm
STMT89655-8B	3/4" 12 Pts Socket 55mm

3/4" RATCHET WITH HANDLE



SKU No.	DESCRIPTION
STMT91316-8B	3/4" Ratchet With Handle

3/4" UNIVERSAL JOINT



SKU No.	DESCRIPTION
STMT93091-8	6 Drawer Rolling Cabinet

3/4" EXTENSION



SKU No.	DESCRIPTION
STMT89307-8B	3/4" Extension 200mm
STMT89308-8B	3/4" Extension 400mm

3/8" ACCESSORIES

1-86-212



1-86-214



SKU No.	DESCRIPTION
1-86-212	Handle Speeder 3/8 Sq. Dr. 380mm
1-86-214	Adapter 3/8" Dr F*1/4" Dr.m
1-86-215	Adapter 3/8 Sq. Dr F*1/2 Sq. Dr.m

3/8" DRIVE RATCHET



SKU No.	DESCRIPTION
STMT86396-8B	3/8" Round Head Ratchet
STMT95894-8B	3/8" Sd Pear Head Ratchet P9

3/8" 6 PT STANDARD SOCKET



SKU No.	DESCRIPTION
STMT72914-8B	3/8" 6 Pt Standard Socket 6mm
STMT72915-8B	3/8" 6 Pt Standard Socket 7mm
STMT72916-8B	3/8" 6 Pt Standard Socket 8mm
STMT72917-8B	3/8" 6 Pt Standard Socket 9mm
STMT72918-8B	3/8" 6 Pt Standard Socket 10mm
STMT72919-8B	3/8" 6 Pt Standard Socket 11mm
STMT72920-8B	3/8" 6 Pt Standard Socket 12mm
STMT72921-8B	3/8" 6 Pt Standard Socket 13mm
STMT72922-8B	3/8" 6 Pt Standard Socket 14mm
STMT72925-8B	3/8" 6 Pt Standard Socket 17mm
STMT72927-8B	3/8" 6 Pt Standard Socket 19mm
STMT72929-8B	3/8" 6 Pt Standard Socket 21mm
STMT72930-8B	3/8" 6 Pt Standard Socket 22mm



3/8" IMPACT SOCKET



SKU No.	DESCRIPTION
STMT73429-8B	3/8" Impact Socket 8mm
STMT73430-8B	3/8" Impact Socket 9mm
STMT73431-8B	3/8" Impact Socket 10mm
STMT73432-8B	3/8" Impact Socket 11mm
STMT73433-8B	3/8" Impact Socket 12mm
STMT73434-8B	3/8" Impact Socket 13mm
STMT73435-8B	3/8" Impact Socket 14mm
STMT73436-8B	3/8" Impact Socket 15mm
STMT73437-8B	3/8" Impact Socket 16mm
STMT73438-8B	3/8" Impact Socket 17mm
STMT73439-8B	3/8" Impact Socket 18mm
STMT73440-8B	3/8" Impact Socket 19mm
STMT73441-8B	3/8" Impact Socket 21mm
STMT73442-8B	3/8" Impact Socket 22mm
STMT73443-8B	3/8" Impact Socket 24mm



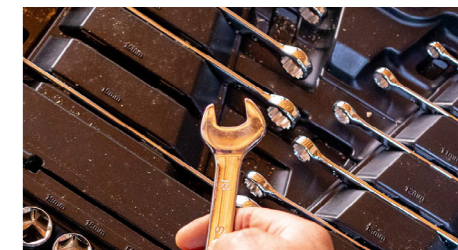
1/2 IN. MECHANICS TOOL SET



SKUS	STMT45501	STMT45502	STMT45503	STMT45504
DESCRIPTION	1/2" DR. 11PCS PEAR HEAD RATCHET SET	1/2" DR. 11PCS PEAR HEAD RATCHET SET	1/2" DR. 26PCS PEAR HEAD RATCHET SET	1/2" DR. 20PCS PEAR HEAD RATCHET SET
RATCHET	72-TOOTH / QUICK RELEASE			
RATCHET LIFE CYCLE	50,000 TIMES			
EXTENSION BAR	--	--	5" - 10"	5" - 10"
SPEED HANDLE	--	--	--	--
BREAKER BAR	--	--	--	YES
METRIC SOCKET RANGE	12-24MM (10PCS)	--	8-32MM (20PCS)	10-32MM (15PCS)
IMPERIAL SOCKET RANGE	--	3/8"-5/16" (10PCS)	--	--
OTHER ACCESSORY	--	--	SPARK PLUG 16MM/ SLIDING T-HANDLE / UNIVERSAL JOINT	BREAKER BAR 15"/ UNIVERSAL JOINT



SKUS	STMT45505	STMT94693	STMT45506	STMT45507
DESCRIPTION	1/2" DR. 43PCS PEAR HEAD RATCHET SET	1/2" DR. 32PCS PEAR HEAD RATCHET SET	1/2" DR. 53PCS PEAR HEAD RATCHET SET	1/2" DR. 36PCS PEAR HEAD RATCHET SET
RATCHET	72-TOOTH / QUICK RELEASE			
RATCHET LIFE CYCLE	50,000 TIMES			
EXTENSION BAR	3" - 5" - 10"	5" - 10"	5" - 10"	5" - 10"
SPEED HANDLE	--	YES	--	--
BREAKER BAR	YES	--	--	--
WRENCH	--	--	--	8-17MM
LONG SOCKET	--	--	10-19MM (8PCS)	--
METRIC SOCKET RANGE	10- 32MM (20PCS)	8-34MM (21CS)	10-24MM (12PCS)	10-32MM (17PCS)
IMPERIAL SOCKET RANGE	3/8" ~ 1-1/4" (15PCS)	--	--	--
OTHER ACCESSORY	SPARK PLUG 5/8", 13/16" UNIVERSAL JOINT	SLIDING T HANDLE / UNIVERSAL JOINT	25 MM BITS (25PCS) 1/4" DRIVE HANDLE & ADAPTOR UNIVERSAL JOINT	SCREWDRIVER (3PCS) LONG NOSE PLIER



SOCKETS, SETS, & SOCKET ACCESSORIES

STANLEY



MIXED TOOL SETS

MASTER TOOL SETS, HONDA TOOL KIT
MULTI-TOOL SETS, HOME TOOL KIT,
TRADESMEN KIT

THE MEASURE OF A PRO
www.STANLEYTOOLS.com

3/8" DRIVE SOCKET ACCESSORIES



SKU No.	DESCRIPTION
STMT86202-8B	3/8" Sliding Tee
STMT86206-8B	3/8" Extension 75mm
STMT86207-8B	3/8" Extension 125mm
STMT86211-8B	3/8" Universal Joint

3/8" DRIVE SOCKET SET



SKU No.	DESCRIPTION
1-89-035	Socket Set 3/8 Sq. Dr. 24pcs-6pt Met
89-035-1	Skt Set 3/8" Dr 24pcs 6pt Met
89-516	Drive Socket Set 46pcs 3/8
STMT74174-8	36pcs 3/8in Metric Socket Module

MASTER TOOL SET



SKU No.	DESCRIPTION
91-931	120pcs Master Tool Set
94-181	150pcs Master Tool Set
99-059	132pcs Met/AI Tool Set

145PCS SOCKET SET



SKU No.	DESCRIPTION
STMT71653	145pcs Skt Set

110PCS MULTI TOOL SET



SKU No.	DESCRIPTION
STMT81243	110pcs Multi Tool Set

- 1 PCS Diagonal Cutting Plier 6"
- 1 PCS Long Nose Plier 8"
- 1 PCS Groove Joint Pliers 10"
- 2 PCS Slotted Screwdrivers: 5.5 X 75mm, 6.5 X100mm.
- 2 PCS Philips Screwdriver: Ph1 X 75mm, Ph2 X100mm.
- 1 PCS 1/4" Bit Adapter Ratcheting Screwdriver.
- 40 Bits - Slotted Bits: 3.5 X 2, 2 X 4, 5.5, 6.5, 8 Mm.
- Square Bits: S1, S2 And S3.
- Philips Bits: Ph0 X 2, Ph1 X 2, Ph2 X 2, Ph3 X 2.
- Adaptors (2 Parts).
- Torx Bits: T10, T15, T20, T25, T27, T30, T40.
- Pozidriv Bits: Pz1, Pz2, Pz3.
- Tri-wing Bits: 1, 2, 3, 4
- Hexagonal Bits: 2, 3, 4, 5, 6, 7 Mm.
- 1 PCS 1/4" Flexible Extension 100mm-1/4"(M)X1/4"(F).
- 1 PCS 1/4" Extension 50mm
- 1 PCS 1/4" Extension 100mm
- 1 PCS 1/2" Extension 125mm
- 1 PCS 1/2" Extension 250mm
- 1 PCS 1/2" 3 Way Adaptor
- 1 PCS 1/4" Universal Joint
- 1 PCS 1/2" Universal Joint
- 1 PCS 1/2" Spark Plug Sockets 16 Mm
- 1 PCS 1/2" Spark Plug Sockets 21 Mm
- 1 PCS 1/4" Ratchet With Quick Release Button 72t
- 1 PCS 1/2" Ratchet With Quick Release Button 72t
- Combination Wrenches: 8-15,17,18,19 Mm
- 8PCS Hex Key Set: 1.5, 2, 2.5, 3, 4, 5, 5.5, 6 Mm
- 1/2" 6pt Socket: 10-15, 17, 18, 19, 20-24, 27 Mm
- 1/4" 6pt Socket: 4, 5, 6, 7, 8, 9, 10, 11, 12, 13, 14 Mm
- 1 Hex Key Rack, 4 Bit Racks.

116PCS ACCESSORY TOOL KIT IN CASE



SKU No.	DESCRIPTION
STHT0-75943	116pcs Accessory Tool Kit In Case

5PCS MIXED HAND TOOL SET



SKU No.	DESCRIPTION
70-882L	5pcs Mixed Hand Tool Set

30PCS HOME TOOL SET



SKU No.	DESCRIPTION
STHT74982	30pcs Home Tool Set

- 1pcs 6" (150mm) Adjustable wrench
- 1pcs 6" (150mm) Long Nose Pliers
- 1pcs 6" (150mm) Universal Plier
- 1pcs 6" (150mm) Diagonal Plier
- 1pcs Multi bit screwdriver
- 20 bits pieces
- 1pcs 8 Oz hammer
- 1pcs Utility knife
- 1pcs 9" torpedo level
- 1pcs 3m/10' tape measure

47PCS HOME TOOL SET



SKU No.	DESCRIPTION
STHT74981	47pcs Home Tool Set

- 1pcs 16 Hex Keys :1.5,2,2.5,3,4,5,5.5 mm
- 1pcs 1/16,5/64,3/32,1/8,5/32,3/16,7/32,1/4 in
- 1pcs 9" Torpedo Level
- 1pcs 3m/10' Tape Measure
- 1pcs 6" (150MM) Adjustable Wrench
- 1pcs Precision Screwdriver: 6" (150MM)
- 1pcs Long Nose Plier- Ph0 X 40mm, Ph0 X 40mm, 2.5 X 40mm
- 1pcs 12 Oz Hammer
- 1pcsS Magnetic Bit Driver
- 20 bits pieces
- 1pcs Utility Knife

125PCS MULTI-TOOL SET



SKU No.	DESCRIPTION
STMT74393-8-23	125pcs Multi-Tool Set

6PCS HAND TOOL SET



SKU No.	DESCRIPTION
70-880	6pcs Hand Tool Set

134PCS MIXED HAND TOOL SET



SKU No.	DESCRIPTION
STHT80960	134pcs Mixed Hand Tool Set Fob

132 PCS HOMEOWNER TOOL SET



SKU No.	DESCRIPTION
STHT77663	132pcs Homeowner Tool Set

- 1box x 13.5" Tool Box
- 1pcs x Utility Knife
- 1pcs x 12 Oz Fiberglass Hammer
- 1pcs x Magnetic Bits Holder
- 10pcs x Screwdriver Bit
- 1pcs x 6" Long Nose Pliers
- 16pcs x SAE & Metric Hex Key Set
- 100pcs x hardware Accessories
- 1pcs x 16' Tape Measure



STANLEY



TOOLS STORAGE

ORGANIZERS, TOOLBOXES,
PORTABLE STORAGE, SOFT STORAGE,
TOOL VEST, ROLLER CABINETS

THE MEASURE OF A PRO
www.STANLEYTOOLS.com

ORGANIZER MAESTRO



SKU No.	DESCRIPTION
1-71-948	13 Organized Maestro
1-71-949	16 Organized Maestro
1-71-950	19 Organized Maestro
1-71-951	22 Organized Maestro

SHALLOW BOX ORGANISER



SKU No.	DESCRIPTION
FMST1-71967	Shallow Box Organiser

SHALLOW BOX



SKU No.	DESCRIPTION
FMST1-71966	Shallow Box

DEEP DRAWER



SKU No.	DESCRIPTION
FMST1-71968	Deep Drawer

SHALLOW BOX (NO FOAM)



SKU No.	DESCRIPTION
FMST1-75502	Shallow Box (No Foam)

2X SHALLOW DRAWER



SKU No.	DESCRIPTION
FMST1-71969	2X Shallow Drawer

DEEP BOX



SKU No.	DESCRIPTION
FMST1-71971	Deep Box

TROLLEY



SKU No.	DESCRIPTION
FMST1-72363	Trolley

HARD TOTE



SKU No.	DESCRIPTION
FMST1-75794	Hard Tote

TOWER



SKU No.	DESCRIPTION
FMST1-80107	Tower

CART



SKU No.	DESCRIPTION
FMST1-71972	Cart

FOAM



SKU No.	DESCRIPTION
FMST1-72365	Foam

DEEP BOX ORGANISER TOP



SKU No.	DESCRIPTION
FMST1-75796	Deep Box Organiser Top

CLIPBOARD



SKU No.	DESCRIPTION
FMST82721-1	Clipboard

COMBO KIT



SKU No.	DESCRIPTION
FMST1-71981	Combo Kit

MOBILE STORAGE BOX



SKU No.	DESCRIPTION
FMST1-75753	Mobile Storage Box

MOBILE BUNDLE ORG TOP



SKU No.	DESCRIPTION
FMST1-80103	Mobile Bundle Org Top

ORGANISER



SKU No.	DESCRIPTION
FMST82967-1	Organiser

SOFT BAG



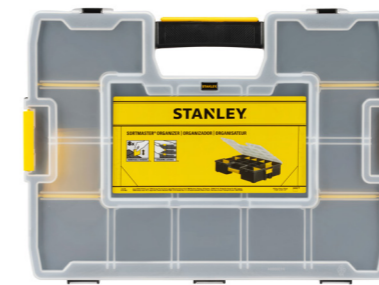
SKU No.	DESCRIPTION
FMST83297-1	Soft Bag

ONE TOUCH TOOLBOX



SKU No.	DESCRIPTION
STST19420	19" One Touch Toolbox

CLASSIC SORTMASTER ORGANIZER



SKU No.	DESCRIPTION
1-94-745	Classic Sortmaster Organiser

TOOLBOX WITH METAL LATCHES



SKU No.	DESCRIPTION
STST19005	19" Toolbox With Metal Latches

PRO TOTE + ORGANIZER BOX



SKU No.	DESCRIPTION
1-97-514	24in Pro Tote + Organiser Box

PRO ORGANIZER - DEEP



SKU No.	DESCRIPTION
1-92-749	Pro Organiser - Deep

CLICK & CONNECT ORGANIZER



SKU No.	DESCRIPTION
STST14440	Click & Connect Organizer

PRO 3IN1 ORGANISER



SKU No.	DESCRIPTION
STST1-71963	Pro 3in1 Organiser

ESSENTIAL WITH REMOVABLE ORGANIZER

NEW



SKU No.	DESCRIPTION
STST75785-1	Essential 16tb W Removable Org
STST75787-1	Essential 19tb W Removable Org

CLASSIC SORTMASTER JUNIOR ORG



SKU No.	DESCRIPTION
1-97-483	Classic Sortmaster Junior Org

CLASSIC SORTMASTER M LEVEL ORG



SKU No.	DESCRIPTION
STST1-75540	Classic Sortmaster M Level Org
STST1-70720	Classic Sortmaster Light Org

3 IN 1 TOOL ORGANIZER



SKU No.	DESCRIPTION
STST17700	New 3 In 1 Tool Organizer
STST73696-8	16" Tool Box - Slide-In Organizer

ORGANIZER



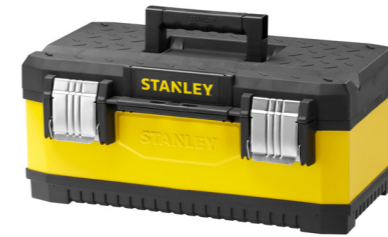
SKU No.	DESCRIPTION
STST73822-8	Turkish Small Organizer
STST73823-8	Turkish Medium Organizer
STST73824-8	Turkish Large Organizer

CLASSIC S2000 TOOLBOX



SKU No.	DESCRIPTION
1-92-064	12.5in Classic S2000 Toolbox
1-92-065	16in Classic S2000 Toolbox
1-92-066	19in Classic S2000 Toolbox
1-92-067	24in Classic S2000 Toolbox

METAL PLASTIC TOOLBOX - YELLOW



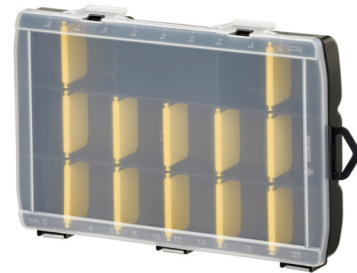
SKU No.	DESCRIPTION
1-95-612	20in Metal Plastic Tbox - Yellow
1-95-613	23in Metal Plastic Tbox - Yellow
1-95-614	26in Metal Plastic Tbox - Yellow

FATMAX CANTILEVER WATERPROOF BOX



SKU No.	DESCRIPTION
FMST81083-1	25in Fatmax Stepstool Tool Box

ESSENTIAL ORGANISER



SKU No.	DESCRIPTION
STST81680-1	Essential 11in Organiser
STST81681-1	Essential 14in Organiser

5 TRAY METAL TOOL BOX



SKU No.	DESCRIPTION
1-94-738	5 Tray Metal Tool Box

FATMAX CANTILEVER WATERPROOF BOX



SKU No.	DESCRIPTION
FMST1-71219	18in Fatmax Cantilever Waterproof Box

16" TOOL BOX PLASTIC LATCH



SKU No.	DESCRIPTION
STST16410	16" New Stanley Plastic Latch

PRO ONE TOUCH TOOLBOX



SKU No.	DESCRIPTION
1-79-216	16in Pro One Touch Toolbox
1-79-217	19in Pro One Touch Toolbox
1-79-218	24in Pro One Touch Toolbox

FATMAX WATERPROOF TOOLBOX



SKU No.	DESCRIPTION
1-94-749	23in Fatmax Waterproof Toolbox

FATMAX CANTILEVER WATERPROOF BOX



SKU No.	DESCRIPTION
FMST1-75792	20in Fatmax Cantilever Pro Toolbox

PRO TOTE + ORGANISER BOX



SKU No.	DESCRIPTION
STST1-70317	19in Stanley Pro Tote + Organizer Box

CLICK & CONNECT TOOL BOX AND ORG



SKU No.	DESCRIPTION
STST1-71962	20in Click & Connect Tool Box And Org

TOOL BOX WITH METAL LATCHES



SKU No.	DESCRIPTION
STST74301-840	16inch Tool Set Case - Clear

TOOL BOX - FLAT TOP



SKU No.	DESCRIPTION
STST73691-8	17.5 inch Tool Box - Flat Top

CLASSIC MOBILE WORK CENTER



SKU No.	DESCRIPTION
1-93-968	Classic Mobile Work Center

TOOL BOX WITH METAL LATCHES



SKU No.	DESCRIPTION
STST1-75515	12.5 inch Tool Box With Metal Latches
STST1-75518	16 inch Essential Toolbox Metal Latches
STST1-75521	19 inch Essential Toolbox Metal Latches
STST82976-1	26 inch Essential Box Metal Latch

ESSENTIAL TOOLBOX BONUS METAL



SKU No.	DESCRIPTION
STST1-75772	Essential Tb Bonus 19inch 12.5inch Metal

ESSENTIAL CANTILEVER BOX



SKU No.	DESCRIPTION
STST83397-1	19in Essential Cantilever Box

FATMAX LARGE JOB CHEST



SKU No.	DESCRIPTION
1-94-850	Fatmax Large Job Chest

TOOL BOX WITH METAL LATCHES



SKU No.	DESCRIPTION
STST16331	16 Essential Tb Plastic Latc

TOOLBOX WITH METAL LATCHES



SKU No.	DESCRIPTION
STST24113	24 inch Toolbox W/Metal Latches

3-IN-1 MOBILE WORKCENTER



SKU No.	DESCRIPTION
STST18613	3-In-1 Mobile Workcenter

CLASSIC PRO-MOBILE JOB CHEST



SKU No.	DESCRIPTION
1-97-503	Classic Pro-Mobile Job Chest

ESSENTIAL JOB CHEST



SKU No.	DESCRIPTION
STST1-80150	Essential Job Chest

CLASSIC BIN SYSTEM



SKU No.	DESCRIPTION
1-93-980	Classic Bin System - 30 Comp
1-93-981	Classic Bin System - 39 Comp

FATMAX OPEN TOTE



SKU No.	DESCRIPTION
1-93-951	Fatmax 18in Open Tote

12" ESSENTIAL TOOL BAG



SKU No.	DESCRIPTION
STST1-70718	12" Essential Tool Bag

ESSENTIAL ROLLING WORKSHOP



SKU No.	DESCRIPTION
STST1-80151	Essential Rolling Workshop

TOOL BAG



SKU No.	DESCRIPTION
1-93-330	12in Tool Bag

FATMAX BACKPACK



SKU No.	DESCRIPTION
1-95-611	Fatmax Backpack

16" ESSENTIAL FOLDED TOOL BAG



SKU No.	DESCRIPTION
STST1-73615	14" Essential Folded Tool Bag
STST1-75536	16" Essential Folded Tool Bag

MODULAR ROLLING TBX



SKU No.	DESCRIPTION
STST83319-1	Modular Rolling Tbx

TOOL BAG



SKU No.	DESCRIPTION
1-93-950	Fatmax 18in Tool Bag

**STANLEY
FATMAX**

OPEN MOUTH TOOL BAG



SKU No.	DESCRIPTION
1-96-182	16in Open Tote
1-96-183	16in Open Mouth Tool Bag

BAG ON WHEELS



SKU No.	DESCRIPTION
1-97-515	Bag On Wheels

WHEELED TOOL BAG



SKU No.	DESCRIPTION
93-328	Wheeled Tool Bag, 510mm-20

FATMAX TOOL BAG



SKU No.	DESCRIPTION
FMST514150	14in Fat Max Tool Bag

SOFT SIDE TOOL BAG



SKU No.	DESCRIPTION
STST512114	12" Soft Side Tool Bag

OPEN MOUTH BAG



SKU No.	DESCRIPTION
STST516126	16" Open Mouth Bag

FATMAX OPEN MOUTH BAG



SKU No.	DESCRIPTION
97-489	16-Inch Fatmax Open Mouth Bag
97-489-23C	16-Inch Fatmax Open Mouth Bag

FATMAX TOOLS BACKPACK ON WHEELS



SKU No.	DESCRIPTION
FMST514196	Fatmax Tools Backpack On Wheels

FATMAX 17" MULTI ACCESS TOOL BAG



SKU No.	DESCRIPTION
FMST1-73607	Fatmax 17" Multi Access Tool Bag

BACKPACK ON WHEELS



SKU No.	DESCRIPTION
STST83307-1	Backpack On Wheels

FATMAX BAG ON WHEELS



SKU No.	DESCRIPTION
FMST1-80148	Fatmax Bag On Wheels

BACKPACK



SKU No.	DESCRIPTION
STST1-72335	Backpack
STST515155-8	Tools Backpack

18" MULTI ACCESS TOOL BAG



SKU No.	DESCRIPTION
FMST517180	18" Multi Access Tool Bag

NYLON TOOL BAG, WATER PROOF



SKU No.	DESCRIPTION
93-222	Nylon Tool Bag, Water Proof, 252mm-10
93-223	Nylon Tool Bag, Water Proof, 305mm
93-224	Nylon Tool Bag, Water Proof, 460mm-18
93-225	Nylon Tool Bag, Water Proof, 660mm-26

POUCH



SKU No.	DESCRIPTION
STST509104	9" Pouch

TOOL VEST



SKU No.	DESCRIPTION
FMST530201	Tool Vest

ESSENTIAL WORKBENCH



SKU No.	DESCRIPTION
STST83492-1	Essential Workbench

FOLD UP LEGS SAWHORSE



SKU No.	DESCRIPTION
1-97-475	Fold Up Legs Sawhorse

TOOL APRON & POUCH



SKU No.	DESCRIPTION
STST511304	Tool Apron
STST511324	Tool Pouch

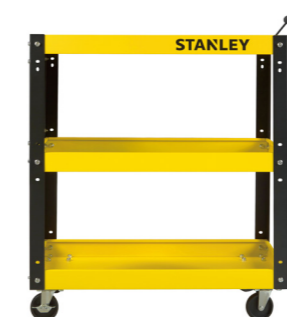
FATMAX TOOL VEST



SKU No.	DESCRIPTION
FMST1-71181	Fatmax Tool Vest

TROLLEY CART - 3 LAYER

NEW



SKU No.	DESCRIPTION
STST74321-8	3 Layer Trolley Cart
STST74322-8	3 Layer Trolley Cart W/O Side Panel

ROLLING CABINET - 5 DRAWERS



SKU No.	DESCRIPTION
STST74305-8	4 Drawer - 27" Roller Cabinet
STST74305-1	5 Drawer - Cabinet (Made In France)

ESSENTIAL TOOL POUCH



SKU No.	DESCRIPTION
1-96-181	Essential Tool Pouch



ROLLING CABINET - 4 DRAWERS



SKU No.	DESCRIPTION
STMT1-75063	4 Drawer - 27" Metal Cabinet

TROLLEY CART - 3 LAYER



SKU No.	DESCRIPTION
STST73833-8	3-Tray Trolley Cart
STST73834-8	3-Tray With 1 Drawer Trolley Cart

ROLLING CABINET - 4 DRAWERS



SKU No.	DESCRIPTION
STMT99069-8	4 Drawers Roller Cabinet

ROLLING CABINET - 7 DRAWERS



SKU No.	DESCRIPTION
STST74306-8	7 Drawer - 27" Roller Cabinet
STST74306-1	7 Drawer - Cabinet (Made In France)

ROLLING CABINET - 5 DRAWERS



SKU No.	DESCRIPTION
96-223L	5 Drawers Bottom Trolley

ROLLING CABINET - 6 DRAWERS NEW



SKU No.	DESCRIPTION
STST74320-8	6 Drawer Rolling Cabinet

ROLLING CABINET - 6 DRAWERS



SKU No.	DESCRIPTION
STST98182-1	6 Drawers Roller Cabinet

ROLLING CABINET - 7 DRAWERS



SKU No.	DESCRIPTION
93-557L	7 Drawers Rolling Cabinet Red

METAL STORAGE RANGE



SKUS	STST74322-8	STST74321-8	STMT1-75063	STST74305-8	STST74320-8	STST74306-8
DESCRIPTION	3-TIER METAL TROLLEY CART (WITHOUT SIDE PANEL)	3-TIER METAL TROLLEY CART (WITH SIDE PANEL)	4 DRAWERS METAL ROLLER CABINET	5 DRAWERS METAL ROLLER CABINET	6 DRAWERS METAL ROLLER CABINET	7 DRAWERS METAL ROLLER CABINET
PRODUCT SIZE W x D x H (MM)	672 x 387 x 673 (EXCL. WHEELS & HANDLE)	672 x 387 x 673 (EXCL. WHEELS & HANDLE)	676 x 460 x 720 (EXCL. WHEELS)	680 x 459 x 744 (EXCL. WHEELS)	678 x 459 x 780 (EXCL. WHEELS)	680 x 459 x 744 (EXCL. WHEELS)
DRAWER SIZE W x D x H (MM)	-	-	-	548 x 410 x 72	TOP 4: 568 x 398 x 75 BOTTOM 2: 568 x 398 x 154	548 x 410 x 72
WHEELS	YES	YES	YES	YES	YES	YES
FOAM	-	-	-	TOP: 5MM EVA MAT	TOP: 3MM EVA MAT BOTTOM 2: 2MM EVA MAT	TOP: 5MM EVA MAT
DRAWER LOAD CAPACITY (KG)	-	-	23	20	35	20
TOTAL LOAD CAPACITY (KG)	STATIC LOAD : 50 DYNAMIC LOAD : 25	STATIC LOAD : 80 DYNAMIC LOAD : 45	270	300	350	300





MEASURING & LAYOUT TOOLS

SHORT/LONG MEASURING TAPES, CONTROL LOCK TAPES, CHALK LINE LEVEL, SQUARE, PLUMB BOB, SQUARES, LEVELS, TORPEDO, BOX, I-BEAM, OPTICAL LEVELS

THE MEASURE OF A PRO
www.STANLEYTOOLS.com

BASIC TAPE



SKU No.	DESCRIPTION
STHT30204-840	Short Tape Rules 3m/10' X13mm
STHT33989-840	Short Tape Rules 5m/16' X 19mm
STHT33994-840	Short Tape Rules 8m/26' X 25mm
STHT36125-8	Short Tape Rules 3m/10' X 13mm
STHT36127-8	Short Tape Rules 5m/16' X 19mm

TYLON SHORT TAPE RULES MET



SKU No.	DESCRIPTION
STHT36190	Tylon Short Tape Rules 3m X 13mm
STHT36191	Tylon Short Tape Rules 5m X 19mm
STHT36192	Tylon Short Tape Rules 8m X 25mm
STHT36193	Tylon Short Tape Rules 3m/10' X 13mm
STHT36194	Tylon Short Tape Rules 5m/16' X 19mm
STHT36195	Tylon Short Tape Rules 8m/26' X 25mm

POWERLOCK PLASTIC CASE & TAPE RULE



SKU No.	DESCRIPTION
STHT33215-8	Powerlock Tape Rule 3.5m/12'X13mm
STHT33158-8	Powerlock 16'/5m Plastic Case-19mm
STHT33428-8	Power Lock 8m/25' Tape
STHT33463-8	Powerlock 10m/33' Plastic Case-25mm

CONTROL-LOCK TAPE MEASURE



SKU No.	DESCRIPTION
STHT37230-0	Control-Lock 3mx19mm Tape Measure
STHT37231-0	Control-Lock 5mx25mm Tape Measure Mag.
STHT37232-0	Control-Lock 8mx25mm Tape Measure Mag.
STHT37233-0	Control-Lock 10mx25mm Tape Measure Mag.
STHT37234-5	Control-Lock 3m/10'X19mm Tape Measure
STHT37235-5	Control-Lock 5m/16'X25mm Tape Measure Mag.
STHT37236-5	Control-Lock 8m/26'X25mm Tape Measure Mag.
STHT37237-5	Control-Lock 10m/33'X25mm Tape Measure Mag.



RUBBERGRIP TAPE RULE



SKU No.	DESCRIPTION
30-611L	3.5m RubberGrip Tape Rule

FENGSHUI TAPE RULES



SKU No.	DESCRIPTION
STHT30256-8	Fengshui Tape Rules 5.5m X 25mm

STEEL LONG TAPE



SKU No.	DESCRIPTION
STHT34104-8	15m/50' Steel Long Tape
STHT34107-8	30m/100' Steel Long Tape

STEEL CLOSED CASE L/T



SKU No.	DESCRIPTION
34-104N-20-159	Steel Closed Case L/T 15m/50ft
34-107N-20-159	Steel Closed Case L/T 30m/100ft

FATMAX KEYCHAIN BULK CONTAINER



SKU No.	DESCRIPTION
FMHT1-33856	Fm Keychain 2m Bulk Container x36

GLOBAL TAPE-YELLOW BLADE



SKU No.	DESCRIPTION
STHT30456-8	Global Tape_8m/26'-25mm-Yellow Blade
STHT30496-8	Global Tape_5m/16'-19mm-Yellow Blade

FIBERGLASS / YELLOW



SKU No.	DESCRIPTION
STHT34260-8	15m / 50ft - Fiberglass / Yellow
STHT34262-8	30m / 100ft - Fiberglass / Yellow
STHT34263-8	50m / 165ft - Fiberglass / Yellow

CHALK LINE



SKU No.	DESCRIPTION
47-440	Chalk Line 30m

GRIP TAPE



SKU No.	DESCRIPTION
STHT0-33561	Grip Tape 5mx28mm

POWERWINDER F/GLASS



SKU No.	DESCRIPTION
2-34-777	Powerwinder F/Glass 100m

OPEN CASE FIBERGLASS/YELLOW



SKU No.	DESCRIPTION
STHT34791-8	30m/100" Open Case Fiberglass/Yellow
STHT34794-8	60m/200" Open Case Fiberglass/Yellow

W/BBLUE CHALK AND LINE



SKU No.	DESCRIPTION
47-443	W/Blue Chalk And Line

POWERWINDER W/RED CHALK



SKU No.	DESCRIPTION
47-465	Powerwinder W/Red Chalk

CHALK REEL PLASTIC- 6



SKU No.	DESCRIPTION
STHT47440-8	Chalk Reel 30m Plastic- 6

STD BLK FINE TIP MARKER CARDX2



SKU No.	DESCRIPTION
0-47-316	Std Blk Fine Tip Marker Card x2

SOLID BRAS PLUMB BOB



SKU No.	DESCRIPTION
47-973	Solid Bras Plumb Bob 8 Oz

CHALK BLUE & RED



SKU No.	DESCRIPTION
1-47-803	Chalk Blue 8 Oz
1-47-804	Chalk Red 8 Oz

OPP CHALK LINE SET



SKU No.	DESCRIPTION
STHT47443-8	30m Opp Chalk Line Set

PLUMB BOB ARCHITECT



SKU No.	DESCRIPTION
0-47-973	Plumb Bob Architect 225g

OPTICAL LEVEL AL24GVP W/SITE



SKU No.	DESCRIPTION
1-77-160	Al24gvp Auto Level W/Site - Eu Plug

PLIERS SET MODULE



SKU No.	DESCRIPTION
1-47-403	Chalk 115g Blue Refill- 12

FATMAX CHISEL TIP MARKER CARD



SKU No.	DESCRIPTION
0-47-315	Fm Chisel Tip Marker Card X3 Clipx12

MARKING GAUGE



SKU No.	DESCRIPTION
2-47-064	Marking Gauge

AL32XL AUTOMATIC LEVEL KIT (DEGREES)



SKU No.	DESCRIPTION
1-77-238	Al32xl Automatic Level Kit (Degrees)

OPTICAL LEVEL AL24G W/O SITE PACK EC



SKU No.	DESCRIPTION
1-77-182	Optical Level Al24g W/O Site Pack Ec

MET DIECAST COMB SQUARE



SKU No.	DESCRIPTION
2-46-028	300mm Met Diecast Comb Square

TRY SQUARE



SKU No.	DESCRIPTION
45-600	Try Square

BEVEL 8



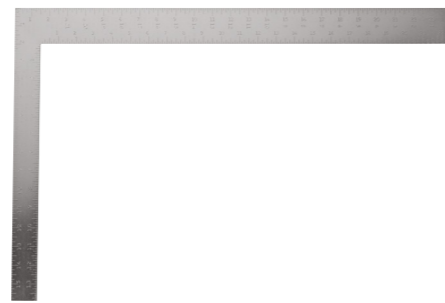
SKU No.	DESCRIPTION
46-825-0	Bevel 8

OPTICAL LEVEL AL24DVP W/SITE



SKU No.	DESCRIPTION
1-77-159N	Al24dvp Auto Level W/Site - UK Plug

SQUARE CARPENTER IMPERIAL



SKU No.	DESCRIPTION
45-500	Square Carpenter Imperial

PLASTIC COMBO-SQUARE



SKU No.	DESCRIPTION
46-012	12" Plastic Combo-Square

PROFESSIONAL SQUARE 12 EM



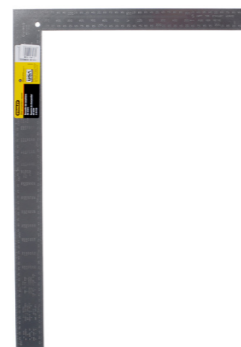
SKU No.	DESCRIPTION
STHT46530-8	Professional Square 12 Em 6
STHT46532-8	Professional Square 12 Em 8
STHT46534-8	Professional Square 12 Em 10
STHT46536-8	Professional Square 12 Em 12

BEVEL



SKU No.	DESCRIPTION
0-46-825	Bevel 200mm

SQUARE CARPENTER METRIC



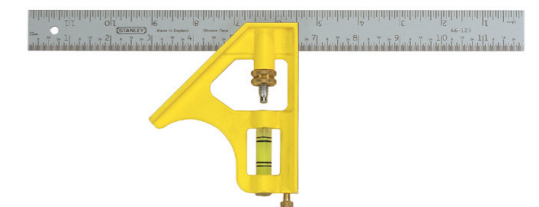
SKU No.	DESCRIPTION
45-530	Square Carpenter Metric

COMBINATION SQUARE



SKU No.	DESCRIPTION
46-028	Combination Square 12" M/E BI

COMBINATION SQUARE METRIC



SKU No.	DESCRIPTION
46-143-KR	Combination Square Metric

MW40M MEASURING WHEEL



SKU No.	DESCRIPTION
1-77-174	Mw40m Measuring Wheel 318mm

FATMAX XTREME BOX BEAM LEVEL



SKU No.	DESCRIPTION
0-43-624	60cm Fatmax Xtreme Box Beam Level

FATMAX XTREME MAGNETIC BOXBEAM LEVEL



SKU No.	DESCRIPTION
0-43-679	Fmx Xtr 200cm Magn Boxbeam Level Eu

FATMAX I-BEAM MAGNETIC



SKU No.	DESCRIPTION
1-43-556	Fm I Beam 1200mm Mag

TORPEDO LEVEL 3 VIALS



SKU No.	DESCRIPTION
0-42-294	Torpedo Level 200mm 3 Vials

FATMAX XTREME BOX BEAM LEVEL



SKU No.	DESCRIPTION
0-43-625	Fm Xtreme Box Beam Level 60cm-Mag_theta

I BEAM LEVEL WITH 180DEG YELLOW



SKU No.	DESCRIPTION
1-42-919	40cm I Beam Level With 180deg Yellow
1-42-921	80cm I Beam Level With 180deg Yellow
1-42-922	100cm I Beam Level With 180 Degrees

FATMAX IOBEAM MAGNETIC



SKU No.	DESCRIPTION
1-43-558	78" Fatmax IObeam Magnetic

FATMAX TORPEDO LEVEL 3 VIALS



SKU No.	DESCRIPTION
0-43-603	Fatmax Torpedo Level 230mm 3 Vials

FATMAX XTREME BOX BEAM LEVEL



SKU No.	DESCRIPTION
0-43-672	180cm Fmax Xtreme Box Beam Level Eu

PRO LEVEL W/MAGNET 24



SKU No.	DESCRIPTION
43-554	Pro Level W/Magnet 24

FATMAX XTREME TORPEDO LEVEL



SKU No.	DESCRIPTION
43-609	Fmax Xtreme Torpedo Level 25cm

FATMAX XTREME TORPEDO LEVEL



SKU No.	DESCRIPTION
43-609I	9" Fatmax Xtreme Torpedo Level

FATMAX EXTREME MAGNETIC



SKU No.	DESCRIPTION
0-43-625	Fatmax Extreme 24" Magnetic
0-43-649	Fatmax Extreme 48" Magnetic

FATMAX 9" XTREME TORPEDO LEVEL



SKU No.	DESCRIPTION
FMHT43610	225mm-9 Fatmax Xtreme Tpd Level

CLASSIC MAGNETIC BOX LEVEL



SKU No.	DESCRIPTION
STHT1-43110	Classic Magnetic Box Level 40cm
STHT1-43111	Classic Magnetic Box Level 60cm
STHT1-43115	Classic Magnetic Box Level 150cm
STHT1-43117	Classic Magnetic Box Level 200cm

I-BEAM LEVEL



SKU No.	DESCRIPTION
STHT42072-8	I-Beam Level 12"/30cm
STHT42073-8	I-Beam Level 18"/45cm
STHT42074-8	I-Beam Level 24/60cm
STHT42075-8	I-Beam Level 36/90cm
STHT42076-8	I-Beam Level 48/120cm

PLASTIC MAGNETIC TORPEDO LEVEL 3 VIAL



SKU No.	DESCRIPTION
STHT42264-8	9" Plastic Megnetic Torpedo Level 3 Vi

PLASTIC TORPEDO LEVEL



SKU No.	DESCRIPTION
STHT42291-8	8" Plastic Torpedo Level

DIE CAST TORPEDO LEVEL



SKU No.	DESCRIPTION
STHT42465-8	9" Die Cast Torpedo Level

ABS LEVEL METRIC/IMPERIAL



SKU No.	DESCRIPTION
STHT42467-8	18" Abs Level Metric/Imperial
STHT42468-8-30	24" Abs Level Metric/Imperial

STANDARD BOX BEAM



SKU No.	DESCRIPTION
STHT42796	Standard Box Beam 12"/30cm
STHT42797	Standard Box Beam 16"/40cm
STHT42798	Standard Box Beam 24"/60cm
STHT42813	Standard Box Beam 39"/100cm
STHT42833	Standard Box Beam 48"/120cm

IV CLASSIC BOX BEAM LEVEL



SKU No.	DESCRIPTION
STHT43118-8	IV Classic Box Beam Level 30cm
STHT43102-8	IV Classic Box Beam Level 40cm
STHT43103-8	IV Classic Box Beam Level 60cm
STHT43104-8	IV Classic Box Beam Level 80cm
STHT43105-8	IV Classic Box Beam Level 100cm
STHT43106-8	IV Classic Box Beam Level 120cm
STHT43107-8	IV Classic Box Beam Level 150cm
STHT1-43108	IV Classic Box Beam Level 180cm

HI IMPACT TORPEDO LEVEL



SKU No.	DESCRIPTION
STHT43511-8	9" Hi Impact Torpedo Level



ELECTRONIC DEVICES & LASERS

MOISTURE METER, THERMOMETER
STUD FINDER & DETECTORS
LASER DISTANCE MEASURERS
LASER LEVELS

THE MEASURE OF A PRO
www.STANLEYTOOLS.com

MOISTURE METER



SKU No.	DESCRIPTION
0-77-030	Moisture Meter

OPP STUD SENSOR S2



SKU No.	DESCRIPTION
STHT77588-0	Opp Stud Sensor S2

FATMAX THERMOMETER



SKU No.	DESCRIPTION
FMHT0-77422	Fm Thermometer

LASER STUD FINDER / LEVEL



SKU No.	DESCRIPTION
0-77-260	Laser Stud Finder / Level

THERMOMETER



SKU No.	DESCRIPTION
STHT0-77365	Thermometer

FATMAX STUD FINDER S300



SKU No.	DESCRIPTION
FMHT0-77407	Fatmax Stud Finder S300

TLM40 LASER DISTANCE MEASURER



SKU No.	DESCRIPTION
STHT77666-0	TLM40 Laser Measurer

LASER DISTANCE MEASURER



SKU No.	DESCRIPTION
STHT1-77139	T1m 165 50m

CUBIX CROSS LINE LASER LEVEL (GREEN)



SKU No.	DESCRIPTION
STHT77499	Cubix Cross Line Laser Level (Green)

SLM65 LASER DISTANCE MEASURER



SKU No.	DESCRIPTION
STHT77065-0	SLM65 20m LDM

LASER DISTANCE MEASURER



SKU No.	DESCRIPTION
STHT1-77140	TLM 330 100m

MULTI-LINE 4V1H AND TRIPOD



SKU No.	DESCRIPTION
STHT77513-8	Multi-Line 4v1h And Tripod

LASER DISTANCE MEASURER



SKU No.	DESCRIPTION
STHT77100-0	S1m100 30m Ldm

CUBIX NEXT GENERATION - RED



SKU No.	DESCRIPTION
STHT77498-1	Cubix next Generation - Red

MULTILINE 4V1H RED



SKU No.	DESCRIPTION
STHT77514-1	Multiline 4V1H Red



STANLEY



SCREWDRIVERS & KEYS

TESTERS, CUSHION GRIP,
FIX BAR SCREWDRIVERS,
INSULATED SCREWDRIVERS,
MULTI-BIT SCREWDRIVERS.

THE MEASURE OF A PRO
www.STANLEYTOOLS.com

SPARK TESTING SCREWDRIVER



SKU No.	DESCRIPTION
66-119-S	S/Dvr -Spark Testing 150mm Pp
66-120-S	Spark Detecting S/D 100-500v

FATMAX VOLTAGE TESTER



SKU No.	DESCRIPTION
FMHT0-64985	Fatmax Voltage Tester

DIGITAL DETECTION SCREWDRIVER



SKU No.	DESCRIPTION
66-133	Digital Detection Screwdriver
66-137-S	Digital Voltage Tester

SCREWDRIVER SET PRECISION BI-MATERIAL



SKU No.	DESCRIPTION
66-052	Screwdriver Set Precision Bi-Material

SCREWDRIVER SET PRECISION BI- MAT



SKU No.	DESCRIPTION
STHT66039-8	S/Dvr Precision Set 6pcs-Red Base Case
STHT66052-8	Screwdriver Set Precision Bi- Mat/6PCS

SCREWDRIVER SET PRECISION



SKU No.	DESCRIPTION
0-65-428	6pcs Fm S/D Set Para Flared Pz Eu
0-65-492	6pcs Fm Sdriver Set Precision

SCREWDRIVER-9 WAY



SKU No.	DESCRIPTION
62-511	Screwdriver-9 Way

MULTI BIT W/RATCHET + 10 BITS



SKU No.	DESCRIPTION
68-010	Multi Bit W/Ratchet + 10 Bits

PUSH-N-PICK RATCHETING SCREWDRIVER



SKU No.	DESCRIPTION
FMHT62287	4 Drawer - 27" Metal Cabinet

6PCS SCREWDRIVER SET -CARDED



SKU No.	DESCRIPTION
STHT65242-8	Cg3 6pcs Set -Carded

20PCS MULTI BIT SCREWDRIVER SET



SKU No.	DESCRIPTION
62-574	20pcs Multi Bit S/D Set

35 IN 1 SCREWDRIVER SET



SKU No.	DESCRIPTION
70-885	35 In 1 Screwdriver Set

35 IN 1 SCREWDRIVER SET



SKU No.	DESCRIPTION
STHT0-70885	35 In 1 Screwdriver Set

10PC RATCHETING MULTI-BIT SCREWDRIVER



SKU No.	DESCRIPTION
STHT68010-8	10pcs Ratcheting Multi-Bit Screwdriver

4 WAY PEN SCREWDRIVER



SKU No.	DESCRIPTION
66-344	4 Way Pen Screwdriver

6PCS SET W/BONUS(TESTER INCLUDED)



SKU No.	DESCRIPTION
STHT92002-8	Cg3 6pcs Set W/Bonus(Tester Included)

9-WAY SCREWDRIVER



SKU No.	DESCRIPTION
STHT62511-8	9-Way Screwdriver

6-WAY SCREWDRIVER



SKU No.	DESCRIPTION
STHT68012-8	6-Way Screwdriver

17PCS SCREWDRIVER SET



SKU No.	DESCRIPTION
STMT65616-LA	17pcs Screwdriver Set

6PCS C/GRIP SCREWDRIVER SET



SKU No.	DESCRIPTION
STMT66672	6pcs C/Grip Screwdriver Set

FIBERGLASS SCREWDRIVER



SKU No.	DESCRIPTION
STMT68107	Fiberglass Screwdriver

10PCS C/GRIP SCREWDRIVER SET



SKU No.	DESCRIPTION
2-65-005	C/Grip 10pcs S/Dr Set

2PCS C/GRIP SCREWDRIVER SET



SKU No.	DESCRIPTION
STMT66670	2pcs C/Grip Screwdriver Set

8PCS C/GRIP SCREWDRIVER SET



SKU No.	DESCRIPTION
STMT66673	8pcs C/Grip Screwdriver Set

48PCS SCREWDRIVER SET + BAG



SKU No.	DESCRIPTION
STHT0-70887	48pcs Screwdriver Set + Bag

CUSHION GRIP SCREWDRIVER PHILLIPS



SKU No.	DESCRIPTION
STMT60800-8	C/Grip S/Driver Ph0 X 75mm
STMT60801-8	C/Grip S/Driver Ph0x100mm
STMT60802-8	C/Grip S/Driver Ph0 X125mm
STMT60803-8	C/Grip S/Driver Ph0 X150mm
STMT60804-8	C/Grip S/Driver Ph1x75mm
STMT60805-8	C/Grip S/Driver Ph1 X100mm
STMT60806-8	C/Grip S/Driver Ph1x150mm
STMT60807-8	C/Grip S/Driver Ph1x200mm
STMT60808-8	C/Grip S/Driver Ph2 X 38mm
STMT60809-8	C/Grip S/Driver Ph2x100mm
STMT60810-8	C/Grip S/Driver Ph2x125mm
STMT60811-8	C/Grip S/Driver Ph2x150mm
STMT60812-8	C/Grip S/Driver Ph2x200mm
STMT60813-8	C/Grip S/Driver Ph2x250mm
STMT60814-8	C/Grip S/Driver Ph3 X150mm
STMT60815-8	C/Grip S/Driver Ph3x200mm
STMT60816-8	C/Grip S/Driver Ph3 X250mm

4PCS C/GRIP SCREWDRIVER SET



SKU No.	DESCRIPTION
STMT66671	4pcs C/Grip Screwdriver Set

6PCS C/GRIP SCREWDRIVER SET W/ BONUS



SKU No.	DESCRIPTION
STMT66679	6pcs C/Grip Screwdriver Set W/ Bonus

8PCS SCREWDRIVERS MODULE



SKU No.	DESCRIPTION
STMT74181-8	8pcs Screwdrivers Module

CUSHION GRIP SCREWDRIVER STANDARD



SKU No.	DESCRIPTION
STMT60817-8	C/Grip S/Driver 3mmx75mm
STMT60818-8	C/Grip S/Driver 3mmx100mm
STMT60819-8	C/Grip S/Driver 3mm X 125mm
STHT65182-8	C/Grip S/Driver 3mm X 125mm
STMT60820-8	C/Grip S/Driver 3mm X 150mm
STMT60821-8	C/Grip S/Driver 5mmx75mm
STMT60822-8	C/Grip S/Driver 5mm X100mm
STMT60823-8	C/Grip S/Driver 5mmx150mm
STMT60824-8	C/Grip S/Driver 5mmx200mm
STMT60825-8	C/Grip S/Driver 6.5mm X 38mm
STMT60826-8	C/Grip S/Driver 6.5mm X 100mm
STMT60827-8	C/Grip S/Driver 6.5mmx125mm
STMT60828-8	C/Grip S/Driver 6.5mmx150mm
STMT60829-8	C/Grip S/Driver 6.5mmx200mm
STMT60830-8	C/Grip S/Driver 6.5mmx250mm
STMT60831-8	C/Grip S/Driver 8mm X 150mm
STMT60832-8	C/Grip S/Driver 8mmx200mm
STMT60833-8	/Grip S/Driver 8mmx250mm
STMT60834-8	C/Grip Sdstandard Parallel 5m X100mm
STMT60835-8	C/Grip Sd Standard Parallel 5mmx150mm
STMT60836-8	C/Grip Sd Standard Parallel 5mmx200mm

CUSHION GRIP SCREWDRIVER TORX



SKU No.	DESCRIPTION
60-838-23	C/Grip S/Driver T6x75mm
STMT60841-8	C/Grip S/Driver T8x75mm
STMT60844-8	C/Grip S/Driver T10x75mm
STMT60845-8	C/Grip S/Driver T15x100mm
STMT60847-8	C/Grip S/Driver T20x100mm
60-847-23	C/Grip S/Driver T20x100mm
STMT60848-8	C/Grip S/Driver T25x100mm
60-848-23	C/Grip S/Driver T25x100mm
STMT60849-840	C/Grip S/Driver T27x100mm
STMT60850-8	C/Grip S/Driver T30x100mm
STHT0-65148	C/Grip S/D Torx Tt10 X 80mm
STHT0-65149	C/Grip S/D Torx Tt15 X 80mm

FIX BAR SCREWDRIVER STANDARD



SKU No.	SIZE
STHT69102-8	3 X 50mm
STHT69103-8	3 X 75mm
STHT69104-8	3 X 100mm
STHT69106-8	3 X 150mm
STHT69106-8	4 X 75mm
STHT69106-8	4 X 150mm
STHT69106-8	6 X 100mm
62-248	6 X 150mm
62-249	6 X 200mm
62-250	6 X 250mm
STHT69121-8	8 X 150mm
STHT69121-8	8 X 200mm
62-254	8 X 250mm
62-255	8 X 300mm

FIX BAR SCREWDRIVER PHILLIPS



SKU No.	SIZE
STHT69138-8	Ph0 X 50mm
STHT69138-8	Ph0 X 100mm
STHT69141-8	Ph1 X 100mm
STHT69179-8	Ph1 X 150mm
STHT69145-8	Ph1 X 200mm
STHT69180-8	Ph2 X 100mm
62-263	Ph2 X 150mm
62-264	Ph2 X 200mm
62-265	Ph2 X 250mm
STHT69148-8	Ph2 X 300mm

STUBBY RATCHETING SCREWDRIVER



SKU No.	DESCRIPTION
66-358	Stubby Ratcheting Screwdriver

2in1 SCREWDRIVER



SKU No.	SIZE
66-432	Phillips #2 X Flat 6.0mm X 28mm (Stubby)
66-433	Phillips 2in1 Screwdriver Ph0 X Flat 3.5mm X 55mm
66-434	Ph1 X Flat 5.0mm X 75mm
66-435	Ph00 X Flat 2.3mm X 60mm
66-436	Ph1 X Ph0 X 200mm
66-437	Ph2 X Ph1 X 200mm
66-438	Ph3 X Ph2 X 200mm
66-439	Ph2 X Flat 6.0mm X 250mm, Insulated
66-446	Ph2 X Flat 6.0mm X 100mm, Insulated
66-447	Ph2 X Flat 6.0mm X 140mm, Insulated
66-448	Ph3 X Flat 8.0mm X 140mm
66-449	Ph2 X Flat 6.0mm X 200mm

VDE SCREWDRIVER SLOTTED



SKU No.	SIZE
65-967-22	Vde S/Dvr Std 4mmx100mm
STMT60163-LA	Vde Screwdriver Slotted 0.6x3.5mmx75mm
STMT60164-LA	Vde Screwdriver Slotted 0.8x4.0x100mm
STMT60165-LA	Vde Screwdriver Slotted 1.0x5.5x125mm
STMT60166-LA	Vde Screwdriver Slotted 1.2x6.5x150mm
STMT60169-LA	Vde Screwdriver Phillips Ph1x5.0x80mm

VDE SCREWDRIVER SET



SKU No.	DESCRIPTION
STMT60175	7pcs Vde Screwdriver Set

VDE 6PCS SET WITH BONUS



SKU No.	DESCRIPTION
65-980-22	Vde 6pcs Set With Bonus

FATMAX PISTOL GRIP MULTIBIT RATCHET



SKU No.	DESCRIPTION
FMHT0-62691	Fm Pistol Grip Ratchet Multibit - 12 Bit

FATMAX PUSH & PICK RATCHET SCREWDRIVER



SKU No.	DESCRIPTION
FMHT62287	Push-N-Pick Multi-Bit Ratcheting Screwdriver

15PCS SCREWDRIVER SET



SKU No.	DESCRIPTION
STHT60129-8	15pcs Screwdriver Set

6-IN-1 SCREWDRIVER



SKU No.	DESCRIPTION
STHT60083-8	6-in-1 Screwdriver

18PCS PRECISION SET



SKU No.	DESCRIPTION
FMHT60089-8	18pcs Precision Set

FATMAX S/D INSULATED SLOTTED



SKU No.	DESCRIPTION
1-65-413	Fm S/D Insulated Slotted 5 X150mm

30PCS SCREWDRIVER SET



SKU No.	DESCRIPTION
STHT60084-8	30pcs Screwdriver Set

MULTI-BITS – PUSH & PICK



SKU No.	DESCRIPTION
STHT69193-8	Multi-Bits – Push & Pick

SHELL PRECISION SCREWDRIVER SET



SKU No.	DESCRIPTION
STHT60090-8	Shell Precision Screwdriver Set

FATMAX INSULATED SCREWDRIVER PHILIPS



SKU No.	DESCRIPTION
1-65-414	Fm S/D Insulated Ph Ph0 X 75mm
1-65-415	Fm S/D Insulated Ph Ph1 X 100mm

MULTI-BIT SETS



SKU No.	DESCRIPTION
STHT60085-8	Multi-Bit Sets

14-IN-1 PRECISION SCREWDRIVER



SKU No.	DESCRIPTION
FMHT60088-8	14-In-1 Precision Sd

4V POWER ASSISTED SCREWDRIVER

NEW



SKU No.	DESCRIPTION
FMHT66719-KR	4v Power Assisted Screwdriver

PLIERS

INSULATED PLIERS, WATER PUMP PLIERS, NOSE PLIERS, LINESMAN PLIERS, PINCERS, CIRCLIP PLIERS, WIRE STRIPPERS, LOCKING PLIERS, SLIP-JOINT PLIERS

THE MEASURE OF A PRO
www.STANLEYTOOLS.com

INSULATED PLIERS



SKU No.	DESCRIPTION
0-84-001	Fatmax Vde Com Pliers 180mm
0-84-002	Fatmax Vde Comb Pliers 200mm
0-84-003	Fatmax Vde Diagonal Pliers 180mm
0-84-006	Fatmax Vde Long Nose 160mm
0-84-008	Fatmax Vde Bent Nose Plier 200mm
0-84-010	Fatmax Vde Wire Strippers 170mm
0-84-294	Fatmax Vde W/Pump 1000v 255mm
0-84-495	Fatmax Flat Nose Plier 160mm
0-89-866	Fatmax Combination Plier 160mm

WATER PUMP PLIERS



SKU No.	DESCRIPTION
71-668	Water Pump Plier, 175mm-7"
71-669	Water Pump Plier, 250mm-10"
71-670	Water Pump Plier, 300mm-12"

VDE COMBINATION PLIERS



SKU No.	DESCRIPTION
84-000	Vde Combination Pliers 6" 160mm
84-001	Vde Combination Pliers 7" 180mm
84-002	Vde Combination Pliers 8" 200mm
84-004	Vde Diagonal Pliers 8" 200mm
84-006	Vde Long Nose Pliers 7" 180mm
84-007	Vde Long Nose Pliers 8" 200mm
84-009	Vde Narrow Head Diagonal Plier
84-011	Vde 3PCS Set (84-001,003,007)

PLIER-SLIP JOINT



SKU No.	DESCRIPTION
84-097	Plier-Slip Joint 6
84-098-23	Plier-Slip Joint, 203mm-8

PLIER DIAGONAL CUTTING



SKU No.	DESCRIPTION
84-104-23	Plier Diagonal Cutting, 127mm-5
84-105-23	Pliers Diagonal Cutting, 6

ROLLING CABINET - 5 DRAWERS



SKU No.	DESCRIPTION
84-110	Plier Groove Joint-10"
84-111	Plier Groove Joint-12"

LINESMAN PLIERS



SKU No.	DESCRIPTION
84-112-23	Plier Linesman, 180mm-7
84-113-23	Plier Linesman, 205mm-8

FATMAX VDE WATERPUMP PLIER 1000V



SKU No.	DESCRIPTION
84-294	Fatmax Vde W/Pump 1000v 250mm

PLIER CIRCLIP, BENT EXTERNAL



SKU No.	DESCRIPTION
84-338-23	Plier Circlip, Bent External 130mm-5"
84-341-23	Plier Circlip, Bent External 180mm-7"
84-348-23	Plier Circlip, Bent External 230mm-9"

LOCKING PLIERS



SKU No.	DESCRIPTION
84-367-1-S	Locking Pliers Curved 5
84-368-1-S	Pliers Locking Curve Jaw-7
84-369-1-S	Bi-Mat Handl, Curv Lock Plier, 254mm-10

PLASTIC NIPPER



SKU No.	DESCRIPTION
84-134-1-23	Plastic Nipper 127mm-5"
84-135-1-23	Plastic Nipper 152mm-6"

CIRCLIP PLIERS



SKU No.	DESCRIPTION
84-271LA	7in S/E Circlip Pliers
84-273LA	7in S/I Circlip Pliers

PLIER CIRCLIP, STRAIGHT INTERNAL



SKU No.	DESCRIPTION
84-362-23	Plier Circlip, Straight Internal 130mm-5"
84-363-23	Plier Circlip, Straight Internal 180mm-7"
84-364-23	Plier Circlip, Straight Internal 230mm-9"

STRAIGHT PRO LOCKING PLIERS



SKU No.	DESCRIPTION
84-370-1-S	Pliers Locking Straight Jaw-7
84-371-1-S	Straight Pro Locking Pliers10"

TOWER PINNERS



SKU No.	DESCRIPTION
84-282	Tower Pincers 10" 250mm
84-288	Hd Pincers 8" 200mm

PLIER CIRCLIP, STRAIGHT EXTERNAL



SKU No.	DESCRIPTION
84-332-23	Plier Circlip, Straight External 130mm-5"
84-334-23	Plier Circlip, Straight External 180mm-7"
84-335-23	Plier Circlip, Straight External 230mm-9"

PLIER CIRCLIP, BENT INTERNAL



SKU No.	DESCRIPTION
84-446-23	Plier Circlip, Bent Internal 130mm-5"
84-447-23	Plier Circlip, Bent Internal 180mm-7"
84-448-23	Plier Circlip, Bent Internal 230mm-9"

LONG NOSE LOCKING PLIERS



SKU No.	DESCRIPTION
84-389-S	Long Nose Locking Pliers 9.5"

FATMAX 8" LINESMAN MULTI-USE PLIER



SKU No.	DESCRIPTION
FMHT75086	Fm 8 In Linesman Multi Use Pliers

CUTTING PLIER



SKU No.	DESCRIPTION
STHT84027-8	6" Diagonal Cutting Pliers
STHT84028-8	7" Heavy Duty Diagonal Cutting Pliers

8" GROOVE JOINT PLIER



SKU No.	DESCRIPTION
STHT84034-8	8" Groove Joint Pliers

BENT NOSE PLIER



SKU No.	DESCRIPTION
STHT84071-8	6" Bent Nose Pliers
STHT84072-8	8" Bent Nose Pliers

GROOVE JOINT PLIERS



SKU No.	DESCRIPTION
STHT84021-8	12" Groove Joint Pliers
STHT84024-8	10" Groove Joint Pliers

LINESMAN PLIER



SKU No.	DESCRIPTION
STHT84029-8	8" Linesman Pliers

7" LINESMAN PLIER



SKU No.	DESCRIPTION
STHT84035-8	7" Linesman Pliers

6" FLAT NOSE PLIER



SKU No.	DESCRIPTION
STHT84073-8-23	6" Flat Nose Pliers

8" SLIP JOINT PLIERS



SKU No.	DESCRIPTION
STHT84026-8	8" Slip Joint Pliers

LONG NOSE PLIERS



SKU No.	DESCRIPTION
STHT84031-8	6" Long Nose Pliers
STHT84032-8	8" Long Nose Pliers

6" SLIP JOINT PLIER



SKU No.	DESCRIPTION
STHT84055-8	6" Slip Joint Pliers

6" WIRE STRIPPER PLIER



SKU No.	DESCRIPTION
STHT84075-8	6" Wire Stripper Pliers

6" END NIPPER PLIER



SKU No.	DESCRIPTION
STHT84077-8	6" End Nipper Pliers

BASIC LINESMAN PLIERS



SKU No.	DESCRIPTION
STHT84112-8	Basic Linesman Pliers 7 in Length (178m)
STHT84113-8	Basic Linesman Pliers 8 in Length (203m)

BASIC CIRCLIP PLIER



SKU No.	DESCRIPTION
STHT84271-8	Basic Circlip Plier Straight Exterior Type
STHT84273-8	Basic Circlip Plier Straight Interior Type
STHT84274-8	Basic Circlip Plier Bent Interior Type

SLIP JOINT PLIER



SKU No.	DESCRIPTION
STHT84401	6in Slip Joint Plier

8" BASIC LONG NOSE PLIER



SKU No.	DESCRIPTION
STHT84102-8	Basic Long Nose Pliers 8 In Length (203)

8" END NIPPER PLIERS



SKU No.	DESCRIPTION
STHT84167-8	8" End Nipper Pliers

11" LOCKING C-CLAMPS



SKU No.	DESCRIPTION
STHT84399-8	Locking C-Clamps-11 In Length

3PCS PLIERS SET



SKU No.	DESCRIPTION
STHT84405	1pcs 6inch Slip Joint Plier, 1pcs 6 Inch Long Nose Plier And 1pcs 6inch Cutting Plier

BASIC DIAGONAL CUTTING PLIERS



SKU No.	DESCRIPTION
STHT84105-8	Basic Diagonal Cutting Pliers 6 In Length
STHT84108-8	Basic Diagonal Cutting Pliers 7 In Length

BASIC HIGH LEVERAGE CABLE CUTTING PLIERS



SKU No.	DESCRIPTION
STHT84258-8	Basic High Leverage Cable Cutting Pliers

PLIER CIRCLIP, BENT INTERNAL



SKU No.	DESCRIPTION
84-446-23	Plier Circlip, Bent Internal 130mm-5"
84-447-23	Plier Circlip, Bent Internal 180mm-7"
84-448-23	Plier Circlip, Bent Internal 230mm-9"

8" HEAVY DUTY DIAGONAL CUTTING PLIERS



SKU No.	DESCRIPTION
STHT84607-8	8" Heavy Duty Diagonal Cutting Pliers

LINESMAN PLIER

STHT84609-8



STHT84623-8



SKU No.	DESCRIPTION
STHT84609-8	9" Linesman Pliers
STHT84623-8	6" Linesman Pliers

3PCS 8" LINESMAN PLIERS SET



SKU No.	DESCRIPTION
STHT90162-8	3 Piece Pliers Set (1) 8 In Linesman Pli

PLIERS SET MODULE



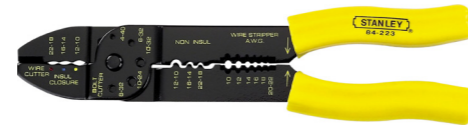
SKU No.	DESCRIPTION
STMT74179-8	4pcs Pliers Set Module
STMT74180-8	4pcs Circlips Pliers Set Module

MINIATURE PLIER



SKU No.	DESCRIPTION
84-096-23	Pliers Mini Needle Nose 5
84-119-23	Plier Miniature, Long Nose, 127mm-5
84-125-23	Plier Miniature, End Niper, 102mm-4

CRIMPING PLIER



SKU No.	DESCRIPTION
84-223-22	Crimping Plier, 230mm- 9
84-253-22	Crimping Plier Set, 230mm-9

WIRE CUTTER

84-214-22



84-475-22



SKU No.	DESCRIPTION
84-214-22	Wire Stripper, 130mm 5 1/4
84-475-22	Wire Stripper(Cutter)-Awg12-22, 150mm-6

CABLE CUTTER



SKU No.	DESCRIPTION
84-630-22	Cable Cutter, 525mm-21, Maxcut 250 Sq. Mm

FATMAX PLIER SET



SKU No.	DESCRIPTION
FMHT0-80524	Fm Mini Pliers 3pcs Set Com Dc NI

NOSE PLIER



SKU No.	DESCRIPTION
STHT84096-8	Basic Needle Nose Pliers 5 In Length

CIRCLIP PLIER



SKU No.	DESCRIPTION
STHT84119-8	Miniature Basic Long Nose Pliers 5 In
STHT84122-8	Basic Flat Nose Pliers 4 In Length

CUTTING PLIER



SKU No.	DESCRIPTION
STHT84124-8	Basic Diagonal Cutting Pliers 4 In Length

NIPPER



SKU No.	DESCRIPTION
STHT84125-8	Basic End Nipper Pliers 4 In Length

NOSE PLIER



SKU No.	DESCRIPTION
STHT84126-8	Basic Bent Nose Pliers 5 In Length

MULTI - TOOL PLIER



SKU No.	DESCRIPTION
0-84-519	Multitool - 12 In 1 With A Pouch
1-84-519	Multitool - 12 In 1 With A Pouch

MINI MULTI TOOL



SKU No.	DESCRIPTION
STHT0-70648	Mini Multi Tool



HEX KEY SETS

FOLDING HEX KEYS, HEX KEY SETS
T-HANDLE HEX KEY SETS,
LONG SPHERICAL HEX KEYS

THE MEASURE OF A PRO
www.STANLEYTOOLS.com

FATMAX LOCKING HEX KEY MM SET



SKU No.	DESCRIPTION
0-97-552	Fm Locking Hex Key Mm Set In Displ

HEX KEY SET - METRIC



SKU No.	DESCRIPTION
69-253	10pcs Hexkey Set 1.5 - 10mm
69-256	Hex Key Set 9pcs Met L/Arm Ball

HEX KEY SET-RING



SKU No.	DESCRIPTION
69-213	Hex Key Set-Ring 10pcs Met
69-230	Hex Key Set-Ring 10pcs Imp

HEX KEY SET 12PCS IMP L/ARM



SKU No.	DESCRIPTION
69-257	Hex Key Set 12pcs Imp L/Arm

8PCS HEX KEY SET 1.5 - 6MM



SKU No.	DESCRIPTION
69-251	8pcs Hexkey Set 1.5 - 6mm

HEX KEY SET 9PCS IMP FOLDING



SKU No.	DESCRIPTION
69-259	Hex Key Set 9pcs Imp Folding

HEX KEY SET 5PCS IMP FOLDING



SKU No.	DESCRIPTION
69-260	Hex Key Set 5pcs Imp Folding

8PCS LONG L-TYPE TAMPER PROOF TORX HEX KEY



SKU No.	DESCRIPTION
92-624	8pcs Long L-Type Tamperproof Torx, Hexkey (T6, T7, T8, T9, T10, T15, T20, T25)

10 PC HEX KEY RING SET



SKU No.	DESCRIPTION
STMT69213-8	10pcs Hex Key Ring Set

HEX KEY SET - IMP



SKU No.	DESCRIPTION
69-252	Hex Key Set 8pcs Imp
69-254	Hex Key Set 10pcs Imp

HEX KEY SET 7PCS MET FOLDING



SKU No.	DESCRIPTION
69-261	Hex Key Set 7pcs Met Folding
69-262	Hex Key Set 7pcs Met Folding

9PCS EXTRA LONG BALL POINT HEX KEY



SKU No.	DESCRIPTION
94-158	9pcs Extra Long Ball Point Hex (1.5, 2, 2.5, 3, 4, 5, 6, 8, 10)

9PCS LONG TORX KEY SET



SKU No.	DESCRIPTION
STMT92625-8	9pcs Long Torx Key Set (T10 To T50)
STMT94162-8	9pcs Long Spheric-Head Hex Key Set

2-WAY T-HANDLE HEX KEY 4 MM



SKU No.	DESCRIPTION
69-280	Hex Key 4.0mm 2-Way T-Handle

8PCS TORX FOLDING HEX KEY SET



SKU No.	DESCRIPTION
69-263	Hex Key Set 8pcs Torx Folding

12PCS LONG BALL POINT HEX KEY



SKU No.	DESCRIPTION
94-163-23	12pcs. Long Ball Point Hex Key (1/16, 5/64, 3/32, 7/64, 1/8, 9/64, 5/32, 3/16, 7/32, 1/4, 5/16, 3/8)

EXTRA LONG BALL HEAD HEX KEY SET



SKU No.	DESCRIPTION
STHT69310-8	6pcs Extra Long Ball Head Hex Key Set
STHT69311-8	7pcs Extra Long Ball Head Hex Key Set
STHT69312-8	8pcs Extra Long Ball Head Hex Key Set

LONG BALL END HEX KEY



SKU No.	DESCRIPTION
94-080	2mm Extra Long Hex Key Ball End
94-088	10mm Extra Long Hex Key Ball End

LONG HEX KEY



SKU No.	SIZE
94-149	12mm
94-150	14mm
94-151	16mm

2-WAY T-HANDLE HEX KEY



SKU No.	SIZE
94-346	4.0mm
94-347	5.0mm
94-348	6.0mm
94-350	8.0mm

LONG SPHERICAL HEX KEY



SKU No.	DESCRIPTION
STMT94099-8-23	Long Spherical Hex Key 1.5mm (6PCS)
STMT94101-8	Long Spherical Hex Key 2.5mm (6PCS)
STMT94102-8	Long Spherical Hex Key 3mm (6PCS)
STMT94103-8	Long Spherical Hex Key 4mm (6PCS)
STMT94104-8	Long Spherical Hex Key 5mm (6PCS)
STMT94106-8	Long Spherical Hex Key 6mm (6PCS)
STMT94108-8	Long Spherical Hex Key 8mm (6PCS)

T HANDLE HEX KEY



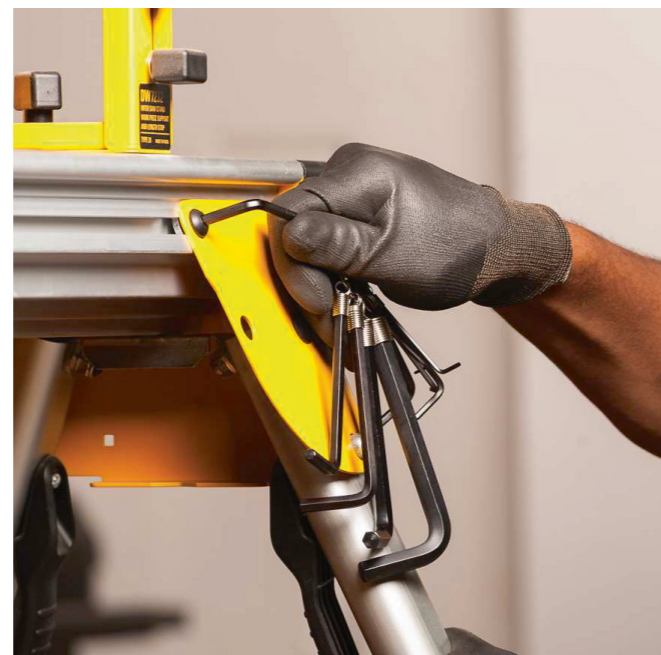
SKU No.	DESCRIPTION
STHT69660-8	T-Handle Ball Head Hex Key 2mm Length 200mm
STHT69661-8	T-Handle Ball Head Hex Key 2.5mm Length 200mm
STHT69662-8	T-Handle Ball Head Hex Key 3mm Length 200mm
STHT69663-8	T-Handle Ball Head Hex Key 4mm Length 200mm
STHT69664-8	T-Handle Ball Head Hex Key 5mm Length 200mm
STHT69665-8	T-Handle Ball Head Hex Key 6mm Length 200mm
STHT69666-8	T-Handle Ball Head Hex Key 7mm Length 200mm
STHT69667-8	T-Handle Ball Head Hex Key 8mm Length 200mm

21 FUNCTIONS MULTI TOOL

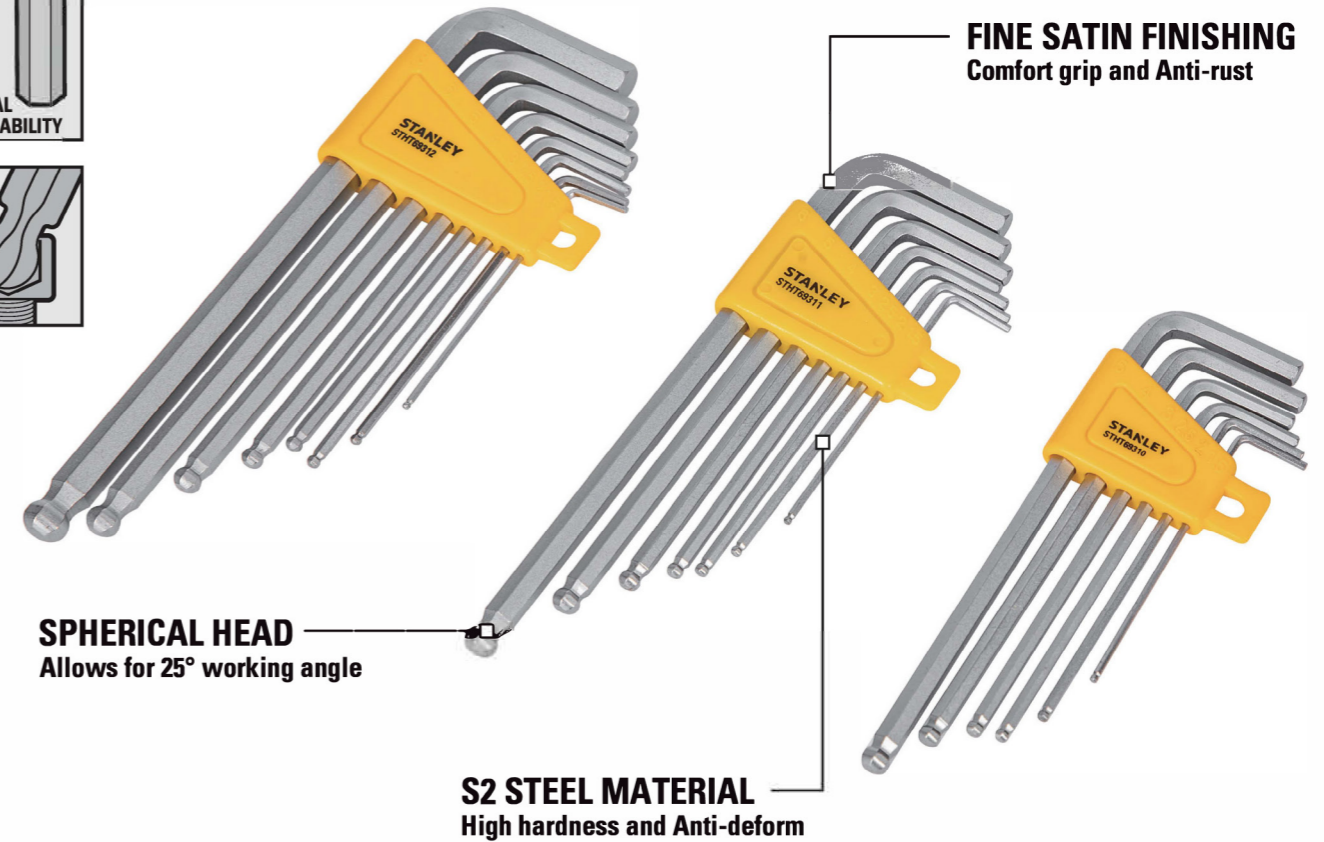
NEW



SKU No.	DESCRIPTION
FMHT26001	21 Functions Multi Tool



LONG SPHERICAL HEX KEY SET



SPHERICAL HEAD
Allows for 25° working angle

S2 STEEL MATERIAL
High hardness and Anti-deform

FINE SATIN FINISHING
Comfort grip and Anti-rust

NEWSKU#	DESCRIPTION	SIZE INCLUDED
STHT69310-8	6PCS LONG SPHERICAL HEX KEY SET	1.5, 2.0, 2.5, 3, 4, 5MM
STHT69311-8	7PCS LONG SPHERICAL HEX KEY SET	1.5, 2.0, 2.5, 3, 4, 5, 6MM
STHT69312-8	8PCS LONG SPHERICAL HEX KEY SET	1.5, 2.0, 2.5, 3, 4, 5, 6, 8MM





STRIKING TOOLS

FIBERGLASS, WOOD GRIP HAMMER
COMPO CAST HAMMER,
ONE PIECE STEEL HAMMER,
HATCHET, CAMP AXE

THE MEASURE OF A PRO
www.STANLEYTOOLS.com

FIBERGLASS NAIL HAMMER



SKU No.	DESCRIPTION
51-186	Fibreglass Nail Hammer 450gms-16
51-187	Fibreglass Nail Hammer 560gms-20

FIBERGLASS HAMMER



SKU No.	DESCRIPTION
STHT51346	70z Fiberglass Hammer
STHT51512	160z Curve Claw Fiberglass Hammer

FIBERGLASS HANDLE HAMMER



SKU No.	DESCRIPTION
56-202	F/G Hdle Hmr 2.5lbs/1.1kg Engr
56-204	F/G Hdle Hmr Emgrg 4lbs/1.8kg

FIBERGLASS HANDLE CLAW HAMMER



SKU No.	DESCRIPTION
STHT51391	160z Fiberglass Handle Claw Hammer
STHT51392	200z Fiberglass Handle Claw Hammer

70Z FIBERGLASS HANDLE NAIL HAMMER



SKU No.	DESCRIPTION
STHT51112-8	70z Yellow Fiberglass Handle Nail Hammer

GLUE-REG GUN ROUND



SKU No.	DESCRIPTION
51-159	Wood Handle Nail Hammer 450gms-16

HAMMER CLAW WOOD



SKU No.	DESCRIPTION
51-269	Hammer 130z Claw Wood

SLEDGE HAMMER



SKU No.	DESCRIPTION
56-803	3lb Sledge Hammer
56-804	4 Lb. Sledgehammer

WOOD HANDLE NAIL HAMMER HEXAGONAL



SKU No.	DESCRIPTION
STHT51339-8	160z Wood Handle Nail Hammer Hexagonal
STHT51370-840	160z Wood Handle Nail Hammer Conical
STHT51371-840	200z Wood Handle Nail Hammer Conical
STHT51373-8	130z Wood Handle Nail Hammer Hexagonal
STHT51374-840	200z Wood Handle Nail Hammer Hexagonal

SOFT FACE "COMPO CAST" HAMMER



SKU No.	DESCRIPTION
57-530A	70z Soft Hammer
57-531A	180z Soft Hammer
57-532A	210z Soft Hammer
57-533A	420z Soft Hammer
57-534A	520z Soft Hammer

BALL PEIN HAMMER



SKU No.	DESCRIPTION
54-107	Ball Pein Hammer 220gms-8
54-111	Ball Pein Hammer 340gms-12
54-114	Ball Pein Hammer 16 Oz Wood
54-115	Ball Pein Hammer 680gms-24
54-118	Ball Pein Hammer 900gms-32

SLEDGE HAMMER



SKU No.	DESCRIPTION
56-808	Sledge Hammer 8lbs Hickory
56-812	Sledge Hammer 12lbs Hickory
56-816	Hammer Sledge Cg 16lb System

WOOD HANDLE BALL PEIN HAMMER



SKU No.	DESCRIPTION
STHT54189-8	80z Wood Handle Ball Pein Hammer
STHT54190-8	120z Wood Handle Ball Pein Hammer
STHT54191-8	160z Wood Handle Ball Pein Hammer

ONE PIECE HAMMER CLAW STEEL



SKU No.	DESCRIPTION
51-081-23	Hammer 160z Claw Steel

BALL PEIN HAMMER WOOD HANDLE



SKU No.	DESCRIPTION
54-193-23	320z Ball Pein Hammer Wood Handle

SOFT FACE HAMMER W/WOOD HANDLE



SKU No.	DESCRIPTION
57-054	Soft Face Hammer W/Wood Handle, 22mm
57-055	Soft Face Hammer W/Wood Handle, 28mm
57-056	Soft Face Hammer W/Wood Handle, 35mm
57-057	Soft Face Hammer W/Wood Handle, 45mm

WOOD HANDLE RUBBER MALLET



SKU No.	DESCRIPTION
STHT57527-8	160z Wood Handle Rubber Mallet
STHT57528-8	240z Rubber Mallet

ONE PIECE STEEL HANDLE NAIL HAMMER



SKU No.	DESCRIPTION
51-082	200z Steel Handle Nail Hammer

ONE PIECE STEEL HANDLE NAIL HAMMER



SKU No.	DESCRIPTION
STHT57527-8	160z Wood Handle Rubber Mallet
STHT57528-8	240z Rubber Mallet

STANLEY



CUTTING TOOLS

KNIVES & BLADES, POCKET, RETRACTABLE KNIVES, UTILITY, SNAP-OFF KNIVES & BLADES, PULL CUTTER, HACKSAW, HANDSAW, SNIP, PIPE BENDER, PLANES, SCRAPER, SURFORM, PAINT ROLLERS

THE MEASURE OF A PRO
www.STANLEYTOOLS.com

SNAP-OFF KNIFE BLADE SLIDER PLASTIC



SKU No.	DESCRIPTION
0-10-150	SO Knife 1 Blade Slider Plastic 9mm
0-10-151	SO Knife 1 Blade Slider Plastic 18mm

KNIFE SNAP OFF BLADE



SKU No.	DESCRIPTION
10-280-0-23	KNIFE SNAP OFF BLADE 18MM

CARTRIDGE KNIFE (CARDED)



SKU No.	DESCRIPTION
0-10-480	PROF.CARTRIDGE KNIFE (CARDED)

ABS AUTO LOCK SNAP OFF KNIFE



SKU No.	DESCRIPTION
STHT10263-8	9mm ABS Auto Lock Snap Off Knife
STHT10264-8	9mm TPR Auto Lock Snap Off Knife
STHT10265-8	18mm ABS Auto Lock Snap Off Knife
STHT10266-8	18mm TPR Auto Lock Snap Off Knife

SNAP-OFF KNIFE



SKU No.	DESCRIPTION
10-131-S	KNIFE S/O 9 MM
10-143-S	KNIFE S/O 18 MM

SNAP-OFF KNIFE



SKU No.	DESCRIPTION
STHT10276-8	18mm Snap-off Knife

WHEEL LOCK SNAP OFF KNIFE



SKU No.	DESCRIPTION
1-10-418	18 Mm Wheel Lock Snap Off Knife

SINGLE-SIDED PULL CUTTER



SKU No.	DESCRIPTION
STHT10355	Single-Sided Pull Cutter (1 Pk)

INTERLOCK SNAPOFF KNIFE



SKU No.	DESCRIPTION
0-10-018	Interlock

RETRACTABLE UTILITY KNIFE



SKU No.	DESCRIPTION
10-175	Retractable Utility Knife, 156mm - 6 1/8

INTEGRATED SNAP-OFF KNIFES

NEW



SKU No.	DESCRIPTION
STHT10489-8	18mm Opp Integrated Snap
STHT10489-8L	18mm Opp Integrated Snap Bulk 12PCS
STHT10501-8	18mm Mpp Integrated Snap Slide
STHT10500-8	18mm Mpp Integrated Snap Wheel
STHT10501-8L	18mm Mpp Integrated Snap Slide Bulk 12PCS

SNAP-OFF KNIFE DYNAGRIP



SKU No.	DESCRIPTION
STHT10409-8	Snap-Off Knife Dynagrip _9mm
STHT10418-8	Snap-Off Knife Dynagrip _18mm
STHT10425-8	Snap-Off Knife Dynagrip _25mm

CLASSIC 99 RETRACTABLE KNIFE



SKU No.	DESCRIPTION
10-099	Classic 99 Retractable, Len 152mm-6, Grey

FATMAX RETRACTABLE UTILITY



SKU No.	DESCRIPTION
10-777	Fatmax Retractable Utility

SLIDE LOCK SNAP OFF KNIFE



SKU No.	DESCRIPTION
STHT10322-800	9mm Slide Lock Snap Off Knife
STHT10323-800	18mm Slide Lock Snap Off Knife

FATMAX SNAP OFF BLADE



SKU No.	DESCRIPTION
10-481	Fatmax 18mm Snap Off Blade

AUTO-RETRACTABLE KNIFE



SKU No.	DESCRIPTION
10-189C	St Knf Carded Safety

FATMAX FIXED BLADE KNIFE



SKU No.	DESCRIPTION
10-780	Fatmax Fixed Blade Knife

QUICK CHANGE KNIFE



SKU No.	DESCRIPTION
10-788	Quick Change Knife

SKELETON FRAME POCKET KNIFE



SKU No.	DESCRIPTION
STHT10253	Skeleton Frame Pocket Knife

RETRACTABLE BLADE UTILITY KNIFE



SKU No.	DESCRIPTION
2-10-099	Retractable Blade Utility

SAFETY WRAP CUTTER



SKU No.	DESCRIPTION
STHT10244	St Knve Cd Wrap Cutter

FATMAX XTREME TWIN BLADE KNIFE



SKU No.	DESCRIPTION
10-789	Fatmax Xtreme Twin Blade Knife

FIXED BLADE FOLDING UTILITY KNIFE



SKU No.	DESCRIPTION
STHT10424-0	Fixed Blade Folding Utility Knife

GLASS CUTTER



SKU No.	DESCRIPTION
14-125	Glass Cutter, Overall Length 130mm 5 1/4"

WRAP CUTTER



SKU No.	DESCRIPTION
STHT10245	St Kn Cl Wrap Cutter

CLASSIC 99 RETRACTABLE UTILITY KNIFE



SKU No.	DESCRIPTION
STHT10099-8	Classic 99 Retractable Utility Knife

DYNAGRIP RETRACTABLE UTILITY KNIFE



SKU No.	DESCRIPTION
STHT10779-8	Dynagripa 1/2 Retractable Utility

SQUEEZE BI-MATERIAL AUTO-RETRACT



SKU No.	DESCRIPTION
FMHT10369	Squeeze Bi-Material Auto-Retract

DOUBLE-SIDED PULL CUTTER



SKU No.	DESCRIPTION
STHT10359	Double-Sided Pull Cutter (1 Pk)

1992 HEAVY DUTY KNIFE BLADE CARDED



SKU No.	DESCRIPTION
0-11-921	1992 Heavy Duty Knife Blade Carded X5

1992 BLADES DISPENSER OF 10 PCS



SKU No.	DESCRIPTION
11-921T	1992 Blades Disp Of 10 Carded Usa

KNIFE-BLADES



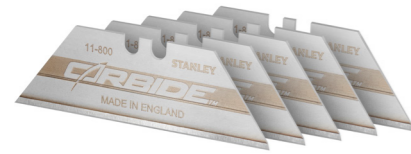
SKU No.	DESCRIPTION
0-11-325	Knife-Blade 26mm Len 110mm (10pcs/Box)
11-300	9mm Quick Point Blade

10-PACK QUICK-POINT KNIFE BLADES



SKU No.	DESCRIPTION
STHT11300-8Q	10-Pack Quick-Point Knife Blades - 9mm

CARBIDE BLADE



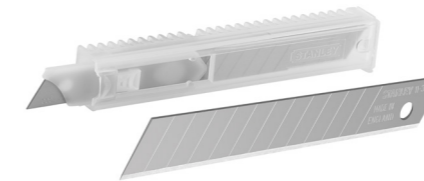
SKU No.	DESCRIPTION
11-800	Carbide Blade - Pack Of 5

KNIFE-BLADE LARGE HOOK



SKU No.	DESCRIPTION
11-983A	Knife-Blade Lrghk Bld19mm Len50mm-100pcs

KNIFE BLADES



SKU No.	DESCRIPTION
11-300H	Knife Blades 9mm Len 85mm, 10 Disp-100p
11-300T	Knife Blades 9mm Length 85mm, 10pcs/Dis
11-301H	Knife Blade 18mm len 110mm, 10 Disp(100pcs)
11-301T	Knife Blades 18mm Len110mm, 10pcs/Disp

KNIFE -BLADE LARGE HOOK CARDED



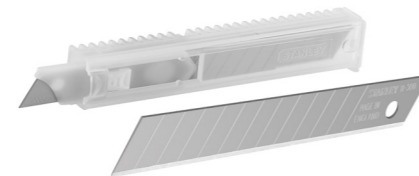
SKU No.	DESCRIPTION
0-11-983	Knif-Blade Lrghk Carded Bld 19mm Len 50mm - 5pcs

CLASSIC 1992 HEAVY DUTY BLADE



SKU No.	DESCRIPTION
11-921H	Classic 1992, Hd Blade 10disp(100pcs.)

SNAP OFF BLADES



SKU No.	DESCRIPTION
0-11-300	Snap Off Blades 9mm
0-11-301	Snap Off Blades 18mm - 10x1

DOUBLE POINTS KNIFE BLADES



SKU No.	DESCRIPTION
STHT11147-8Q	18mm Double Points Knife Blades

100 PK RAZOR BLADE



SKU No.	DESCRIPTION
11-515	100 Pk Razor Blade

SCRAPER-BLADE



SKU No.	DESCRIPTION
28-510	Scraper-Bld For 28-500

SNAP OFF SLIDER KNIFE PLASTIC TPR (3 BLADE)



SKU No.	DESCRIPTION
STHT10270-0	So Knife 3 Blade Slider Plastic Tpr 18mm

HACKSAW-JUNIOR



SKU No.	DESCRIPTION
0-15-218	Hacksaw-Jnr 150mm-6 Blade Len 254mm-10
0-20-807	Mini Hacksaw

HACKSAW 3-7/8 WITH 10B



SKU No.	DESCRIPTION
15-408	Hacksaw 3-7/8 With 10b

RAZOR BLADE SCRAPER



SKU No.	DESCRIPTION
28-500	Razor Blade Scraper

FATMAX RETRACTABLE KNIFE



SKU No.	DESCRIPTION
0-10-778	Fatmax Retractable Knife

HACKSAW-STEEL FRAME



SKU No.	DESCRIPTION
15-166	Hacksaw-Stfrm,450mm-17 3/4,Bld-305mm-1

HACKSAW ADJ



SKU No.	DESCRIPTION
15-565-S	Hacksaw Adj 10"/225mm

BETTER SNAP-OFF KNIFE (DIAL) W/ TPR



SKU No.	DESCRIPTION
STHT10268-8-23	18mm Better Snap-Off Knife (Dial) W/ Tpr

ROUNDED TIP BLADE



SKU No.	DESCRIPTION
11-987-81	Rounded Tip Blade (5PCS In)

RUBBER GRIP HACKSAW ADJ.FRAME



SKU No.	DESCRIPTION
15-265-S	Rubber Grip Hacksaw Adj.frame

12" D SHAPE HACKSAW



SKU No.	DESCRIPTION
STHT20138	Hacksaw 12" D Shape

FIXED HACKSAW



SKU No.	DESCRIPTION
STHT20206-8	12" Fixed Hacksaw

UTILITY MINI-HACKSAW



SKU No.	DESCRIPTION
STHT20807-8	10" Mini-Hack Utility Saw

SAW CROSSCUT



SKU No.	DESCRIPTION
20-006-23	Saw Crosscut 22" X7t/8p
20-007-23	Saw Crosscut 24" X7t/8p
20-080	Saw Crosscut 6t/7pt 18
20-083-23	Saw Crosscut 6t/7pt 24

WALL BOARD SAW



SKU No.	DESCRIPTION
0-15-556	Wall Board Saw

BI-METAL HACKSAW BLADE



SKU No.	DESCRIPTION
STHT20298-8	Bi-Metal Hacksaw Blade 24x12

MINI ROLLER FRAME



SKU No.	DESCRIPTION
STHT29095-8MF	Mini Roller Frame 16" With 4
STHT29094-8MF	4" Paint Roller Mf Refill

CLAMPING MITRE BOX WITH SAW



SKU No.	DESCRIPTION
20-600	Clamping Mitre Box With Saw

SAW BLADE (4/PK) COPING



SKU No.	DESCRIPTION
15-059	Saw Blade (4/Pk) Coping

HEAVY DUTY BI-MATERIAL HANDSAW



SKU No.	DESCRIPTION
STHT20373-LA	Hd Bi-Mat Handsaw 15in 380mm 8 Tpi
STHT20374-LA	Hd Bi-Mat Handsaw 18in 450mm 8 Tpi
STHT20375-LA	Hd Bi-Mat Handsaw 20in 500mm 8 Tpi
STHT20376-LA	Hd Bi-Mat Handsaw 22in 550mm 8 Tpi

MINI HACKSAW



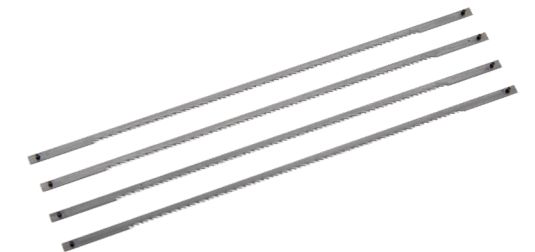
SKU No.	DESCRIPTION
20-807	Mini Hacksaw, Blade Length 254mm-10

SAW CROSSCUT



SKU No.	DESCRIPTION
STHT20004-8	Saw Crosscut 18"X7t/8p
STHT20005-8	Saw Crosscut 20"X7t/8p
STHT20081-8	Saw Crosscut 20"X6t/7p
STHT20082-8	Saw Crosscut 22"X6t/7p

BLADE FOR SAW COPING



SKU No.	DESCRIPTION
15-061	Blade For Saw Coping 4-3/4" Dept

3-IN-1 MULTI-PURPOSE SAW



SKU No.	DESCRIPTION
20-092	3-In-1 Multi-Purpose Saw

WALL BOARD SAW



SKU No.	DESCRIPTION
15-556	150mm Wall Board Saw

FATMAX FLUSH-CUT PULL SAW



SKU No.	DESCRIPTION
20-331	Fatmax Flush Cut Pull Saw

COPING SAW



SKU No.	DESCRIPTION
STHT15104-8	Coping Saw 120mm / 4 -3/4" Depth

WALLBOARD SAW



SKU No.	DESCRIPTION
15-206	Wallboard Saw 152mm

FATMAX COMPASS SAW



SKU No.	DESCRIPTION
17-205	12" F/Max Comp/Saw 11tpi J/Cut Hp Us

FATMAX JAB SAW



SKU No.	DESCRIPTION
20-556	Fatmax Jab Saw

FATMAX HOOK KNIFE



SKU No.	DESCRIPTION
10-510	Fatmax Hook Knife

SAW KEYHOLE



SKU No.	DESCRIPTION
15-275	Saw Keyhole

HACKSAW HAND JAB



SKU No.	DESCRIPTION
0-20-220	Hacksaw Hand Jab

FATMAX FOLDING JABSAW



SKU No.	DESCRIPTION
FMHT20559	Fatmax Folding Jabsaw

CABLE CUTTER



SKU No.	DESCRIPTION
84-258-23	Cable Cutter, Len 250mm-10, Max 60sq. Mm

MINI TUBING CUTTER



SKU No.	DESCRIPTION
93-033-22	Mini Tubing Cutter 1/8"-5/8"

PIPE CUTTER



SKU No.	DESCRIPTION
93-028-22	2 1/2" Pipe Cutter

PVC PIPE CUTTER



SKU No.	DESCRIPTION
14-442-22	Pvc Pipe Cutter, Up To 42mm

MINI PIPE BENDER



SKU No.	DESCRIPTION
70-451-22C	6/8/10mm Mini Pipe Bender

TUBING CUTTERS



SKU No.	DESCRIPTION
93-020-22	Tubing Cutters 3-28mm
93-021-22	Tubing Cutter H/D, 3mm-1/8 To 28mm-1/4

BOLT CUTTER



SKU No.	DESCRIPTION
14-308-S	Bolt Cutter 8
14-312-S	Bolt Cutter-Forged Handle 12
14-314-S	Bolt Cutter-Forged Handle 14
14-318-S	Bolt Cutter-Tubular Handle
14-324-S	Bolt Cutter-Tubular Handle
14-330-S	Bolt Cutter-Tubular Handle
14-336-S	Bolt Cutter-Tubular Handle

MAXSTEEL AVIATION SNIPS-LEFT CUT



SKU No.	DESCRIPTION
STHT14562-8	Maxsteel Aviation Snips-Left Curve, 254mm-10

AVIATION SNIP ALL PURPOSE



SKU No.	DESCRIPTION
14-569-22	7" Aviation Snip All Purpose

AVIATION SNIP STRAIGHT CUT



SKU No.	DESCRIPTION
STHT14563-8	Maxsteel Aviation Snips-Straight Curve, 254mm-10

TIN SNIPS STRAIGHT BI-MATERIAL



SKU No.	DESCRIPTION
2-14-556	Tin Snips 250mm Straight Bi-Ma

MAXSTEEL AVIATION SNIPS-RIGHT CUT



SKU No.	DESCRIPTION
STHT14564-8	Maxsteel Aviation Snips-Right Curve, 254mm-10

MAXSTEEL SNIP-ALL PURPOSE



SKU No.	DESCRIPTION
14-558-22	Maxsteel Snip-All Purpose 12

FATMAX STRAIGHT CUT AVIATION SNIP



SKU No.	DESCRIPTION
FMHT73756-0	Fm Ergo Aviation Snip - Straight Cut 250

PIPE CUTTER



SKU No.	DESCRIPTION
STHT0-14103	Shears

TINSNIPS W/O SPRING



SKU No.	DESCRIPTION
14-163	Tinsnips W/O Spring, 200mm-8
14-164	Tinsnips W/O Spring, 250mm-10
14-165	Tinsnips W/O Spring, 300mm-12
14-166	Tinsnips W/O Spring, 350mm-14

MINI PIPE BENDER



SKU No.	DESCRIPTION
STHT74995-8	8" Hedge Shears

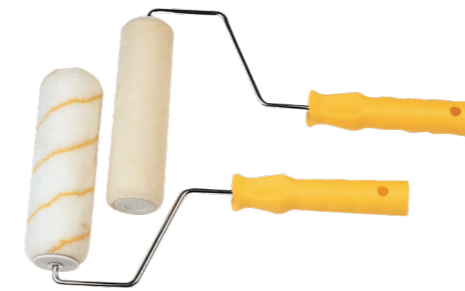
SHEARS-PRUNING BYPASS



SKU No.	DESCRIPTION
14-302-23	Shears-Pruning Bypass 8
14-303-23	Shears-Pruning Anvil 8



PAINT ROLLER



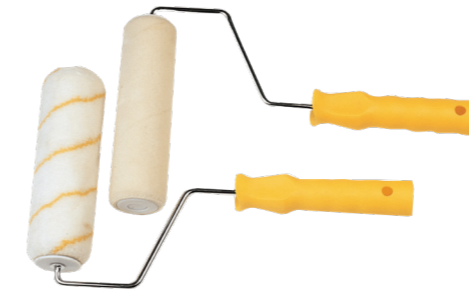
SKU No.	DESCRIPTION
1-29-064	Paint Roller Complete 7
1-29-069	Paint Roller Complete 9
1-29-401	Paint Roller Complete 9

MINI ROLLER KIT



SKU No.	DESCRIPTION
1-29-480	Mini Roller Kit

PAINT ROLLER COMPLETE



SKU No.	DESCRIPTION
1-29-493	Paint Roller Complete 7
1-29-494	Paint Roller Complete 7

ROLLER REFILL



SKU No.	DESCRIPTION
2-29-816	Roller Refill Mini 2/Pk

PAINT ROLLER COMPLETE



SKU No.	DESCRIPTION
1-29-814	Mini Roller 4" Complete
1-29-821	Paint Roller Complete 7"
1-29-822	Rollers 9" & Tray Set

PAINT BRUSH-ALLMASTER



SKU No.	DESCRIPTION
29-031-1	Paint Brush-Allmaster 1
29-032-1	Paint Brush-Allmaster 1 1/2
29-033-1	Paint Brush-Allmaster 2
29-034-1	Paint Brush-Allmaster 2 1/2
29-035-1	Paint Brush-Allmaster 3
29-036-1	Paint Brush-Allmaster 4

STANLEY



SPECIALTY TOOLS

GREASE GUN, AIR GUN, INSP MIRROR
3 JAW PULLER, FEELER GAUGE,
TYRE REPAIR KIT, OIL FILTER WRENCH,
SCREW EXTRACTOR, BOTTLE JACKS

THE MEASURE OF A PRO
www.STANLEYTOOLS.com

GREASE GUN HEAVY DUTY



SKU No.	DESCRIPTION
95-385-2V	Grease Gun Heavy Duty - 400gm

FLARING TOOL SET 3/16" -5/8"



SKU No.	DESCRIPTION
93-040	Flaring Tool Set 3/16" -5/8

FEELER GAUGE



SKU No.	NEW SKU NUM	SIZE
70115-S	STMT78212-8	Feeler Gauge 25 Blades (0.04, 0.05, 0.06, 0.07, 0.08, 0.09, 0.10, 0.15, 0.20, 0.25, 0.30, 0.35, 0.40, 0.45, 0.50, 0.55, 0.60, 0.65, 0.70, 0.75, 0.80, 0.85, 0.90, 0.95, 1.00mm)

OIL FILTER SPANNER STRAP TYPE



SKU No.	DESCRIPTION
997694-S	Oil Filter Wrench Strap Type

PRECISION AIR GUN



SKU No.	DESCRIPTION
79-058	Precision Air Gun 4 In

MAGNETIC PICK UP TOOL



SKU No.	DESCRIPTION
STHT25114-0	18" Abs Level Metric/Imperial
STMT78020-8-23	24" Abs Level Metric/Imperial

ROUND INSPECTION MIRROR



SKU No.	DESCRIPTION
STMT78241-8-23	Round Inspection Mirror

DIGITAL TIRE PRESSURE GAUGE



- Easy to Read Digital Display
- Comfort Grip Handle
- Made of Automotive Chemical Resistant Materials
- Integrated LED for Use at Night or Dark Areas
- 0.5 PSI Resolution
- Batteries Included

SKU No.	DESCRIPTION
STHT80874-0	Digital Tire Pressure Gauge

FLAT TYRE REPAIR KIT



- Easily repair the punctures without removing the tyre from the rim
- Sturdy handle for added leverage
- Includes 5 repair strings

SKU No.	SIZE
STHT80891-0	Flat Tyre Repair Kit

FOOT PUMP



- High Pressure Cylinder Foot Pump
- Can be used for cars, bikes, balloons etc., (adapters included)
- Compact Size - No need too much room in your car
- Lightweight about 1kg

SKU No.	DESCRIPTION
STHT80894-1	Foot Pump

3 JAW GEAR PULLER



SKU No.	DESCRIPTION	IMAGE
70746-S	75mm	A
70747-S	100mm	A
70748-S	150mm	A
70875-S	200mm	B
70876-S	250mm	B
70877-S	300mm	B

EXTRACTORS SET



SKU No.	DESCRIPTION
94-171	5PCS Extractors Set - (3, 6, 8, 11, 14mm)

BOTTLE JACK



SKU No.	DESCRIPTION
ST90801CE	8000kg-8 Ton
ST92001CE	20000kg-20 Ton
ST-93001CE	30000kg-30 Ton
ST-95001CE	50000kg-50 Ton

PICK & HOOK SET



SKU No.	DESCRIPTION
82-115	Pck & Hook 4pcs Set

FILE HANDY C/W HANDLE



SKU No.	DESCRIPTION
22-078H	File Handy 8" C/W Handle

FILE, CHAIN SAW



SKU No.	DESCRIPTION
22-082B	File, Chain Saw 5/32 X 8 Bulk
22-083	File-Chain Saw 3/16x8" Indivi
22-083B	File-Chain Saw 3/16x8" Box Of
22-087B	File-Chain Saw 7/32x8" Box Of

FILE-EXTRA SLIM TAPERED



SKU No.	DESCRIPTION
22-090	File-Extra Slim Tapered 4
22-091	File-Double Extra Slim 4

MILL BASTARD CARDED



SKU No.	DESCRIPTION
22-096	Mill Bastard 10" Carded

FLAT BASTARD CARDED



SKU No.	DESCRIPTION
22-170-28	Flat Bastard 6" Carded
22-173B	File-Flat Bastard 12" Box Of



FINISHING TOOLS

FILES & RASPS, PLANES,
SURFORMS

THE MEASURE OF A PRO
www.STANLEYTOOLS.com

FILE-SLIM TAPERED



SKU No.	DESCRIPTION
22-304	File-Slim Tapered 4" Indivi
22-304B	File-Slim Tapered 4" Box Of
22-305	File-Slim Tapered 5" Indivi
22-305B	File-Slim Tapered 5" Box Of
22-306-28	File-Slim Tapered 6" Indivi

HOBBY FILE SET



SKU No.	DESCRIPTION
22-316	6PCS 5-1/2 Hobby File Set

BLOCK PLANE IRON



SKU No.	DESCRIPTION
0-12-504	Block Plane Iron G12-060 N.b
0-12-508	Block Plane Iron G12-020/G12-220nb

BENCH PLANE



SKU No.	DESCRIPTION
1-12-004	Bench Plane (No.4 Bailey)
1-12-005	Bench Plane (No.5 Bailey)
1-12-006	Bench Plane (No.6 Bailey)
1-12-007	Bench Plane (No. 7 Bailey)

1/2 BLOCK PLANE



SKU No.	DESCRIPTION
1-12-020	9 1/2 Block Plane

BENCH PLANE (SB4)



SKU No.	DESCRIPTION
1-12-034	Bench Plane (Sb4)

N 4 BENCH PLANE



SKU No.	DESCRIPTION
1-12-136	N 4 Bench Plane

IRON BENCH PLANE REPLACEMENT BLADE



SKU No.	DESCRIPTION
1-12-313	S 2" Iron

SURFORM BLOCK PLANE



SKU No.	DESCRIPTION
5-21-104	Surform Block Plane

SURFORM ROUND BLADE



SKU No.	DESCRIPTION
5-21-291	Surform Round Blade

BENCH PLANE



SKU No.	DESCRIPTION
1-12-203	Bench Plane (H1203) H/Man
1-12-204	Bench Plane (H1204) H/Man
1-12-205	Bench Plane (H1205) H/Man

SURFORM ROUND REPLACEMENT BLADE



SKU No.	DESCRIPTION
21-291	10" Rd Usa Enviro
21-293	10" Std Usa Enviro

SURFORM SHAVER



SKU No.	DESCRIPTION
5-21-115	Surform Shaver

SURFORM STANDARD FLAT BLADE



SKU No.	DESCRIPTION
5-21-293	Surform Standard Flat Blade

BLOCK PLANE



SKU No.	DESCRIPTION
1-12-220	220 Block Plane

SURFORM STANDARD FILE



SKU No.	DESCRIPTION
5-21-103	Surform Standard File

SURFORM PLANER FILE



SKU No.	DESCRIPTION
5-21-122	Surform Planerfile

SURFORM FLAT FILE



SKU No.	DESCRIPTION
5-21-295	Surform Flat File
5-21-296	Surform Standard Plane

SURFORM HALF ROUND BLADE



SKU No.	DESCRIPTION
5-21-299	Surform Half Round Blade

SURFORM SHAVER BLADE



SKU No.	DESCRIPTION
5-21-515	Surform Shaver Blade

SURFORM FINE FLAT BLADE



SKU No.	DESCRIPTION
5-21-398	Surform Fine Flat Blade 5 1/2

ADJUSTABLE SMOOTHING PLANE



SKU No.	DESCRIPTION
STHT12163-8	Adjustable Smoothing Plane, Number 3
STHT12164-8	Adjustable Smoothing Plane, Number 4
STHT12165-8	Adjustable Smoothing Plane, Number 5

SURFORM BLOCK PLANE



SKU No.	DESCRIPTION
5-21-399	Surform Block Plane

CORRUGATED PLANE



SKU No.	DESCRIPTION
STHT12175-8	5 Corrugated Plane



STANLEY



WORKHOLDING & CLAMPS

WORKBENCH, VICE, TRIGGER CLAMP,
C-CLAMPS, F-CLAMP

THE MEASURE OF A PRO
www.STANLEYTOOLS.com

LIGHT DUTY & HEAVY DUTY BENCH VICE



SKU No.	DESCRIPTION
1-83-065	100mm/4" Light Duty Vice
1-83-066	100mm/4" Hd Bench Vice
1-83-067	125mm/5" Hd Bench Vice
1-83-068	150mm/6" Hd Bench Vice

MAXSTEEL MULTI-ANGLE BASE VISE



SKU No.	DESCRIPTION
83-069-KR	Maxsteel Multi-Angle Base Vise

MULTI ANGLE HOBBY VICE



SKU No.	DESCRIPTION
1-83-069	Multi Angle Hobby Vice

METAL SPRING CLAMP



SKU No.	DESCRIPTION
9-83-080	50mm/2metal Spring Clamp(Merch X30)
9-83-079	25mm/1"Metal Spring Clamp(Merch X50)

VICE MECHANICS- 1



SKU No.	DESCRIPTION
81-601-1-22	Vice 100mm Mechanics- 1
81-602-1-22	Vice 120mm Mechanics- 1
81-603-1-22	Vice 150mm Mechanics- 1
81-604-1-22	8" Bench Vise W Base

FATMAX L-TRIGGER CLAMP



SKU No.	DESCRIPTION
FMHT0-83238	Fm XI Trigger Clamp - 150mm
FMHT0-83239	Fm XI Trigger Clamp - 300mm
FMHT0-83240	Fm XI Trigger Clamp - 600mm
FMHT0-83241	Fm XI Trigger Clamp - 900mm
FMHT0-83242	Fm XI Trigger Clamp - 1250mm

MAXSTEEL "G" CLAMP



SKU No.	DESCRIPTION
0-83-031	Maxsteel 25mm/1" "G" Clamp
0-83-032	50mm/2" "G" Clamp
0-83-033	75mm/3" "G" Clamp
0-83-034	100mm/4" "G" Clamp
0-83-035	150mm/6" "G" Clamp

C CLAMP MAXSTL



SKU No.	DESCRIPTION
0-83-033	C Clamp Maxstl, Size 75mm-3x57mm-2 1/4
83-034K	C Clamp Maxsteel, Size 100mm-4 X 75mm-3
0-83-036	C Clamp Maxsteel 8

FATMAX CLUTCH-LOCK F-CLAMP



SKU No.	DESCRIPTION
FMHT0-83244	Fm Clutch Lock F Clamp 200mm
FMHT0-83245	Fm Clutch Lock F Clamp 400mm
FMHT0-83246	Fm Clutch Lock F Clamp 600mm
FMHT0-83247	Fm Clutch Lock F Clamp 800mm

FATMAX S-TRIGGER CLAMP



SKU No.	DESCRIPTION
FMHT0-83231	Fm S Trigger Clamp

FATMAX M-TRIGGER CLAMP



SKU No.	DESCRIPTION
FMHT0-83232	Fm M Trigger Clamp - 150mm
FMHT0-83233	Fm M Trigger Clamp - 300mm

FATMAX L-TRIGGER CLAMP



SKU No.	DESCRIPTION
FMHT0-83234	Fm L Trigger Clamp - 150mm
FMHT0-83235	Fm L Trigger Clamp - 300mm
FMHT0-83236	Fm L Trigger Clamp - 600mm
FMHT0-83237	Fm L Trigger Clamp - 900mm



**TO UNLOCK
THE POTENTIAL
TO BUILD**

STANLEY



FASTENING TOOLS

SOLDERING IRON, GLUE GUNS CORDED/CORDLESS, GLUE STICKS, RIVETING, STAPLING

THE MEASURE OF A PRO
www.STANLEYTOOLS.com

FATMAX XL-TRIGGER CLAMP



SKU No.	DESCRIPTION
69-031B	Soldering Iron 30w/220v Round Pin
69-031C	Soldering Iron 30w/220v Flat
69-033B	Soldering Iron 45w/220v Round
69-041B	Soldering Gun 100w/220v Round
69-041C	Soldering Gun 100w/220v Flat

TRIGGER-FEED CORDED GLUE GUN



SKU No.	DESCRIPTION
69-028B	69-028b, Trigger-Feed Corded Gl

DUAL MELT GLUE STICKS



SKU No.	DESCRIPTION
1-GS10DT	Dual Melt 24pk 7mm Glue Sticks
1-GS15DT	Dual Melt 6pk 12mm Glue Sticks
1-GS20DT	Dual Melt 24pk 12mm Glue Sticks

GLUE-MINI GUN



SKU No.	DESCRIPTION
69-GR10B	Glue-Mini Gun R-Pin 100-240v

GLUE-MINI GUN



SKU No.	DESCRIPTION
69-GR10C	Glue-Mini Gun F-Pin 100-240v

GLUE-REG GUN ROUND



SKU No.	DESCRIPTION
69-GR20B	Glue-Reg Gun Round Pin 100-240v Ce
69-GR20C	Glue-Reg Gun F-Pin 100-240v Ce

GLUE-REG GUN R-PIN DUAL



SKU No.	DESCRIPTION
69-GR25B	Glue-Reg Gun R-Pin Dual

6-GR90 CORD FREE STD GLUEGUN



SKU No.	DESCRIPTION
STHT6-70416	6-Gr90 Cord Free Std Gluegun

LIGHT DUTY STAPLE GUN



SKU No.	DESCRIPTION
6-TR35	Light Duty Staple Gun Eu Pkg
6-TR45	Tr45 Light Duty Staple Gun A Type

MANUAL STAPLER



SKU No.	DESCRIPTION
TR150	Manual Stapler

GLUE-CORDLESS GUN R-PIN



SKU No.	DESCRIPTION
69-GR90B	Glue-Cordless Gun R-Pin

MEDIUM DUTY RIVETER



SKU No.	DESCRIPTION
STHT69646-8	Medium Duty Riveter 3 Nozzles
STHT69800-8	Heavy Duty Riveter 4 Nozzles

1000 STAPLES PACK



SKU No.	DESCRIPTION
STHT72674-9	Tr250 + 3000 Staples Pack

HEAVY DUTY STAPLE GUN



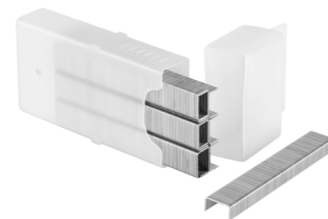
SKU No.	DESCRIPTION
TR250	Heavy Duty Staple Gun

GLUE STICK



SKU No.	DESCRIPTION
GS10DT	Glue Stick 24pcs 4" Mini Dual
GS20DT	Glue Stick 24pcs 4" 20dt-Dual
GS25DT	Glue Stick 12pcs 10" 25dt-Dual

STAPLES



SKU No.	DESCRIPTION
1-TRA204T	6mm/1/4" L/D Staples(1 000) A Type
1-TRA205T	8mm/5/16" L/D Staples(1 000) A Type
1-TRA206T	10mm/3/8" L/D Staples(1 000) A Type
1-TRA704T	6mm/1/4" H/D Staples(1 000) G Type
1-TRA705T	8mm/5/16" H/D Staples(1 000) G Type
1-TRA706T	10mm/3/8" H/D Staples(1000) G Type

HEAVY DUTY STAPLE GUN



SKU No.	DESCRIPTION
TR110	Heavy Duty Staple Gun

SHARP SHOOTER-MULTI PURPOSE



SKU No.	DESCRIPTION
TR45-S	Sharp Shooter-Multi Purpose

STANLEY



PRY BARS

WRECKING BAR, RIPPING BAR, FUBAR

THE MEASURE OF A PRO
www.STANLEYTOOLS.com

BAR WRECKING



SKU No.	DESCRIPTION
55-104	Bar Wrecking 36

CLAW BAR BLACK FINISH



SKU No.	DESCRIPTION
55-114	Claw Bar 10" Black Finish
55-115	Claw Bar 12" Black Finish

MOLDING BAR BLACK FINISH



SKU No.	DESCRIPTION
55-117	Molding Bar 10" Black Finish

BAR RIPPING



SKU No.	DESCRIPTION
55-118	Bar Ripping 5/8x18
55-124	Bar Ripping 24

RIPPING BAR



SKU No.	DESCRIPTION
55-130	Ripping Bar

HEXAGONAL STRAIGHT BAR



SKU No.	DESCRIPTION
55-150	Hexagonal Straight Bar 1.5m

BAR WONDER PRY



SKU No.	DESCRIPTION
55-526	Hexagonal Straight Bar 1.5m

FATMAX PRO FUBAR



SKU No.	DESCRIPTION
1-55-120	Fm Pro Fubar 30inch/762mm



CHISEL & PUNCHES

COLD CHISEL, PUNCH & CHISEL SET,
PUNCH, WOOD CHISEL

THE MEASURE OF A PRO
www.STANLEYTOOLS.com

PIN PUNCHES & COLD CHISEL SET



SKU No.	DESCRIPTION
16-299	Pin Punches & Cold Chisel Set, 12pcs

CONCRETE CHISEL WITH GUARD



SKU No.	DESCRIPTION
16-329	Chisel Concrete 3/4" X 12" W/Guard

CHISEL COLD WITH GUARD



SKU No.	DESCRIPTION
16-332	Chisel Cold, 1" X 12" (Long) W/Guar

COLD CHISELS



SKU No.	DESCRIPTION
STHT16287-8	Cold Chisels (1/2 X 6 In)
STHT16288-8	Cold Chisels (5/8 X 7 In)
STHT16289-8	Cold Chisels (3/4 X 6 In)
STHT16290-8	Cold Chisel (7/8" / 22mm)
16-290	Chisel Cold, 22mm-7/8 X 203mm-8

COLD CHISEL-LONG



SKU No.	DESCRIPTION
STHT16291-8	Cold Chisel-Long (1" / 25mm)

PIN PUNCHES SET



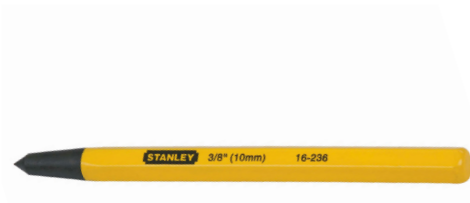
SKU No.	DESCRIPTION
16-226	Pin Punches Set, 6pcs

CENTER PUNCH



SKU No.	DESCRIPTION
16-228	Center Punch, 8mm-5/16 X 115mm-4 1/2
16-227	Center Punch, 1/4" X4

PRICK PUNCH



SKU No.	DESCRIPTION
16-236	Prick Punch, 10mm-3/8 X 140mm-5 1/2

DYNAGRIP WOOD CHISEL



SKU No.	SKU No
16-273	Dynagrip Wood Chisel 6mm 1/4
16-275	Dynagrip Wood Chisel 10mm 3/8
16-276	Dynagrip Wood Chisel 12mm 1/2
16-278	Dynagrip Wood Chisel 16mm 5/8
16-279	Dynagrip Wood Chisel 18mm 3/4
16-281	Dynagrip Wood Chisel 22mm 7/8
16-282	Dynagrip Wood Chisel 25mm 1
16-283	Dynagrip Wood Chisel 32mm
16-284	Dynagrip Wood Chisel 38mm

WOOD CHISEL SET



SKU No.	DESCRIPTION
16-089	Wood Chisel Set, 3pcs

DYNAGRIP WOOD CHISEL SET



SKU No.	DESCRIPTION
16-285	Dynagrip Wood Chisel 3pcs Set

WOOD CHISEL



SKU No.	DESCRIPTION
16-308	Wood Chisel 12mm
16-312	Wood Chisel 18mm
16-316	Wood Chisel 25mm
16-320	Wood Chisel 32mm

WOOD CHISEL 1/4 SET



SKU No.	DESCRIPTION
STHT16120-8	Wood Chisel 1/4 Set 6-Piece



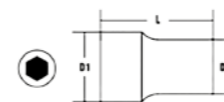


VDE CERTIFIED TOOLS

1000V INSULATED FOR SAFETY OF WORK

THE MEASURE OF A PRO
www.STANLEYTOOLS.com

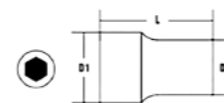
3/8" VDE INSULATED METRIC SOCKET



- For use with metric hexagonal screws
- Made with chrome vanadium steel
- VDE-certified, 1000V insulated for safety of work, insulated tools to prevent risk of short circuit.

MODEL NO.	SPEC(MM)	DI(MM)	D2(MM)	L(MM)
STMT77797-23B	8	18.7	23	45
STMT77798-23B	10	19.5	23	45
STMT77813-23B	12	21.2	23	45
STMT77814-23B	13	22.5	23	45
STMT77815-23B	14	23.7	23	45
STMT77816-23B	16	26.2	23	45
STMT77817-23B	17	27.5	23	45
STMT77818-23B	18	28.7	23	45

1/2" VDE INSULATED METRIC SOCKET



- For use with metric hexagonal screws
- Made with chrome vanadium steel
- VDE-certified, 1000V insulated for safety of work, insulated tools to prevent risk of short circuit.

MODEL NO.	SPEC(MM)	DI(MM)	D2(MM)	L(MM)
STMT77829-23B	10	19.5	27	55
STMT77830-23B	11	20.7	27	55
STMT77831-23B	12	22	27	55
STMT77832-23B	13	23.2	27	55
STMT77833-23B	14	24.5	27	55
STMT77834-23B	16	27	27	55
STMT77835-23B	17	28.2	27	55
STMT77837-23B	19	30.7	27	55
STMT77838-23B	21	32	27	55
STMT77839-23B	22	33.2	27	55
STMT77840-23B	24	34.5	27	60

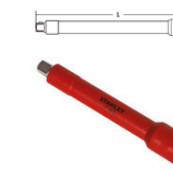
1/2" VDE INSULATED SOCKET EXTENSION



MODEL NO.	SPEC	L(MM)
STMT77849-23B	1/2"	125
STMT77850-23B	1/2"	250

- For use with the corresponding socket
- VDE-certified, 1000V insulated for safety of work, insulated tools to prevent risk of short circuit.

3/8" VDE INSULATED SOCKET EXTENSION



MODEL NO.	SPEC	L(MM)
STMT77825-23B	3/8"	125
STMT77826-23B	3/8"	250

- For use with the corresponding socket
- Made with chrome vanadium steel
- VDE-certified, 1000V insulated for safety of work, insulated tools to prevent risk of short circuit.

1/2" VDE INSULATED RATCHET



MODEL NO.	SPEC	L(MM)
STMT77828-23B	1/2"	250

- Clockwise and counterclockwise switch mode
- Lock the socket quickly, easily and safely
- VDE-certified, 1000V insulated for safety of work, insulated tools to prevent risk of short circuit.

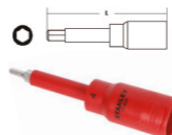
3/8" VDE INSULATED RATCHET



MODEL NO.	SPEC	L(MM)
STMT77824-23B	3/8"	200

- Clockwise and counterclockwise switch mode
- Lock the socket quickly, easily and safely
- VDE-certified, 1000V insulated for safety of work, insulated tools to prevent risk of short circuit.

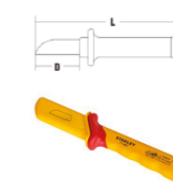
1/2" VDE INSULATED HEX DRIVER SOCKET



- For use with metric hexagonal screws
- Made with chrome vanadium steel
- VDE-certified, 1000V insulated for safety of work, insulated tools to prevent risk of short circuit.

MODEL NO.	SPEC	L(MM)
STMT77844-23B	4	120
STMT77845-23B	5	120
STMT77846-23B	6	120
STMT77847-23B	8	120
STMT77848-23B	10	120

VDE INSULATED STRAIGHT CABLE KNIFE



- Uses a secured solid-core knife blade
- An ergonomically designed dual material handle, for a comfortable grip
- VDE-certified, 1000V insulated for safety of work, insulated tools to prevent risk of short circuit.
- Comes with a safety sleeve

MODEL NO.	SPEC	L(MM)
STMT77867-23B	50	180

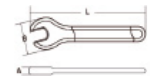
VDE INSULATED VOLTAGE TESTER W/ SCREWDRIVER

MODEL NO.	D(MM)	L(MM)
STMT77873-23B	20	120



- VDE-certified
- With a testing range between 125v and 250v AC
- Handle and shank wrapped in a layer of insulation
- Manufactured in compliance with the VDE 0680 Standard

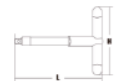
VDE INSULATED OPEN END WRENCH



- VDE-certified, 1000V insulated for safety of work, insulated tools to prevent risk of short circuit.
- An ergonomically designed dual material handle, for a comfortable grip
- With a 15-degree angle offset

MODEL NO.	SPEC(MM)	L(MM)	A(MM)	B(MM)
STMT77713-23B	8	99.5	7.5	25.3
STMT77715-23B	10	110	8	31
STMT77717-23B	12	130	8.5	36
STMT77718-23B	13	140	10.5	39
STMT77719-23B	14	150	10.5	40
STMT77722-23B	15	160	11.5	42
STMT77723-23B	16	165	11.5	43
STMT77724-23B	17	165	12.5	47
STMT77725-23B	18	175	13	50
STMT77726-23B	19	180	14	53
STMT77727-23B	21	195	14	55
STMT77728-23B	22	205	14	58
STMT77729-23B	24	230	14	62

1/2" VDE INSULATED T-HANDLE WRENCH



Model No.	SPEC	L(MM)	H(MM)
STMT77851-23B	1/2"	200	140

- 1/2" square drive, used to create the threading
- VDE-certified, 1000V insulated for safety of work, insulated tools to prevent risk of short circuit.



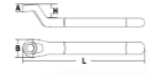
VDE INSULATED ROUND CLAMP

MODEL NO.	L(MM)
STMT77872-23B	150



- VDE-certified
- Used to firmly clamp cable wire
- Insulation can withstand up to 1,000 volts, compliant with the VDE 0680 Standard

VDE INSULATED BOX END WRENCH



- VDE-certified, 1000V insulated for safety of work, insulated tools to prevent risk of short circuit.
- An ergonomically designed dual material handle, for a comfortable grip
- Wrench head has a 75-degree deep offset

MODEL NO.	SPEC(MM)	L(MM)	A(MM)	B(MM)	H(MM)
STMT77747-23B	8	150	8.5	16.5	19
STMT77749-23B	10	170	9	21	20
STMT77751-23B	12	190	10	22.5	21
STMT77752-23B	13	200	11	26.5	23
STMT77753-23B	14	210	12	28	23
STMT77754-23B	15	215	12	29	24
STMT77755-23B	16	220	12	31	26
STMT77756-23B	17	220	13	32	26
STMT77757-23B	18	230	13	35	28
STMT77758-23B	19	240	14	36	28
STMT77759-23B	21	250	14	39	30
STMT77760-23B	22	260	15	41	30
STMT77761-23B	24	280	16	44	32

VDE ADJUSTABLE WRENCH



Model No.	SPEC	L(MM)	A(MM)	B(MM)
STMT77765-23	8	210	24	6
STMT77766-23	10	260	35.6	6

- VDE-certified, 1000V insulated for safety of work
- CRV Material for longer life time



STANLEY

**HIT HARDER.
CUT SHARPER.
WORK FASTER.**



POWER TOOLS

STANLEY has a full range of power tools, accessories and hand tools to suit the needs of the professional tradesman to get their job done.

PRODUCT RANGE

- Drill & Fastening
- Grinder & Chop Saw
- Hammer
- Cordless Tools
- Construction Saw
- Wood Working

VALUED TRADESMAN & APPLICATIONS

- Construction
- Commercial and Industrial
- Renovation
- Facility Installation
- Metal Fabrication



CONSTRUCTION



CARPENTER



INSTALLER



ELECTRICIAN



PLUMBING



MECHANIC



**WE MAKE
PROFESSIONAL
THE STANDARD**

**CONTACT CENTER
LOCATOR** 

 www.2helpU.com

Country	Address	Service Center Number	Customer Care Number
China	2F Lai Chuang Saloon, No.6 Weixin Road, Suzhou City, Jiangsu Province, China - 215127	+86-512-65473889	400-690-2821
Japan	9-22-8 Tajima, Sakura-ku, Saitama City, Saitama Prefecture	+81-3-3288-3010 #1	
Malaysia	Black & Decker Asia Pacific (M) Sdn Bhd. No 15-1 & 15-2, Jalan SS23/15, Taman SEA, 47400 Petaling Jaya Selangor D.E Malaysia	(603) 7880 1913 Ext: 51106 M: (6016) 3409435	1800-818-760
Singapore	65 Ubi Road 1, #03-60, Oxley Bizhub 1, Singapore 408729	(65) 6747 1711	
Philippines	Black and Decker Asia Pacific Pte. Ltd. Unit 2A, VSK Corporate Circle Bldg. #2 Acacia Lane cor. Shaw Blvd. Mandaluyong City, 1550 Philippines	02-8299-3772	1800-1322-0127
Indonesia	+62 855 7467 9105	India	1860-425-1111 (Toll Free)
Korea	+82-1577-0933	Thailand	Contact 02-7484800 Total care 02-5088765



STANLEY

STANLEY

Distributor
Information